



Exam : 070-281

**Title : Planning, Deploying, and Managing an
Enterprise Project Management Solution**

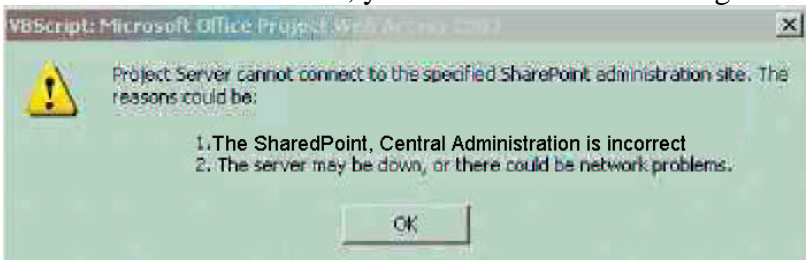
Ver : 12.26.06

QUESTION 1:

You are the administrator of the Microsoft Enterprise Project Management solution for Certkiller .com.

You deploy Microsoft Office Project Server 2003 in your organization on Certkiller 1 in the domain called "Domain1.consoto.com." You choose to set up Microsoft Windows SharePoint Services configuration information at a later time. You decide to use an existing instance of Windows SharePoint Services for Issues and Risks on Certkiller 2 in the domain named "Domain2.adatum.com" which is located in a separate forest that is not trusted.

When you attempt to connect the project server installation to use the Windows SharePoint Services server, you receive the error message shown in the Exhibit.



You click on the Test Url link to connect to the Microsoft SharePoint Central Administration page on Certkiller 2. You connect successfully.

You need to ensure that project Issues and Risks are available.

What should you do?

- A. Create an account in Domain2 named WSSAdmin. Make it a member of the Administrators group. Run PSComPlus.exe on Certkiller 1. Use the WSSAdmin account you created for the Windows SharePoint Services identity.
- B. Create an account in Domain2 named WSSAdmin. Make it a member of the Administrators group. Run PSComPlus.exe on Certkiller 2. Use the WSSAdmin account you created for the Windows SharePoint Services identity.
- C. Create an account in Domain1 named WSSAdmin. Make it member of the Administrators group. Create a new Application Pool Identity on Certkiller 2. Set the Application Pool to use the WSSAdmin account.
- D. Create an Account in Domain2 named WSSAdmin. Make it a member of the Administrators group. Create a new Application Pool Identity on Certkiller 2. Set the Application Pool to use the WSSAdmin account.

Answer: A

Explanation:

There are two places in Microsoft Project Server Setup where you are asked for Windows account information: at the "Enter Analysis Services connection information" page and the "Enter account information for Windows SharePoint Services (continued)" page. This account information is used to generate the COM+ packages Microsoft Project Server uses in order to start other processes such as creating OLAP cubes or

administering the SharePoint server. Thus it follows that if you want to ensure that project managers can access the Project Server Public Documents site you should run the PSComPlus.exe utility.

Reference:

Microsoft Training and Certification: Microsoft Official Curriculum: Planning, Deploying, and Managing an Enterprise Project Management solution; Delivery Guide, Course Number 2732A, Module 3: Installing and Configuring Project System Servers, Microsoft Press, Redmond, 2003, p. 1

QUESTION 2:

You are the administrator of Microsoft Office Project Server 2003 for Certkiller .com. You are asked to provide access to your implementation of Project Server to traveling users. These users will connect to the project server by using the Internet to communicate with the project server from their portable computers. The network administrator has locked down these computers to protect network security. You add the project server's Internet address to the list of Trusted Sites on each of the portable computers. You confirm that these users can access the project server from their portable computers while connected to Certkiller .com's network by using Windows domain accounts.

These traveling users cannot connect to the project server by using the Internet. By using Microsoft Office Project Web Access, users try to connect to the project server's Internet address. Users see an error message that states, "You are not authorized to view this page."

You need to ensure that traveling users can connect to the project server when connecting by using the Internet.
What should you do?

- A. Enable Access Data Sources Across Domains in the Trusted Sites zone.
- B. Set User Authentication in the Local Internet zone to Automatic Logon in Local Internet zone.
- C. Add the project server's Internet address to the list of sites that are allowed to use cookies regardless of the settings.
- D. Set User authentication in the Trusted Sites zone to Automatic Logon with Current Name and Password.

Answer: D

Explanation:

If the Project Server URL is not a member of the trusted sites zone, then there could be issues with downloading the controls that let Project Web Access display its data. Make sure that the security settings in Internet Explorer allow for the downloading of signed ActiveX controls. If the security settings in Internet Explorer do not allow it to run ActiveX controls then most views in Project Web Access will not work. Internet Explorer must be able to run ActiveX controls for Project Web Access to work properly. According to the question the ActiveX controls are allowed to run. Thus it is a problem of not having the ability to log on to the server via the Internet. Option D provides the solution.

Reference:

Microsoft Training and Certification: Microsoft Official Curriculum: Planning, Deploying, and Managing an Enterprise Project Management solution; Delivery Guide, Course Number 2732A, Module 13: Troubleshooting Project Server 2003, Microsoft Press, Redmond, 2003, p. 21

QUESTION 3:

You are the administrator of Microsoft Office Project Server 2003 for Certkiller .com. You install Microsoft SQL Server 2000 and Analysis Services on Certkiller 1. You create valid service accounts with the appropriate permissions. You begin the installation of Project Server on Certkiller 2. During installation when you are asked to supply information on Certkiller 1, you choose to enter this information later. You decide that your Microsoft Enterprise Program Management solution requires Portfolio Analyzer functionality. You enter and save the Analysis Services and cube name on the Update resource tables and OLAP cube administration page.

You need to implement Portfolio Analyzer functionality by using the least administrative effort.

What should you do?

- A. Run PSMigrat.exe.
- B. Run ConnInfo.exe.
- C. Run PSComPlus.exe.
- D. Run SetTracing.exe

Answer: C

Explanation:

There are two places in Microsoft Project Server Setup where you are asked for Windows account information: at the "Enter Analysis Services connection information" page and the "Enter account information for Windows SharePoint Services (continued)" page. This account information is used to generate the COM+ packages Microsoft Project Server uses in order to start other processes such as creating OLAP cubes or administering the SharePoint server. Thus it follows that if you want to implement Portfolio Analyzer functionality by using the least administrative effort, you should run PSComPlus.exe. The ConnInfo.exe utility must be used after backing up and restoring the data information. It is also used to point the Project Server frontend server to the new SQL Server. And this is not what is required.

Reference:

Microsoft Training and Certification: Microsoft Official Curriculum: Planning, Deploying, and Managing an Enterprise Project Management solution; Delivery Guide, Course Number 2732A, Module 3: Installing and Configuring Project System Servers, Microsoft Press, Redmond, 2003, p. 1

QUESTION 4:

You are the administrator of the Microsoft Enterprise Project Management solution for

Certkiller .com.

Certkiller .com wants to use Microsoft Office Project Server 2003. You plan an initial configuration with Microsoft SQL Server 2000, Analysis Services, Project Server, Session Management, and Views Processing each installed on an individual server. You initial configuration is designed for 500 users. You expect a rapid growth of up to 3000 users of the Enterprise Project Management solution. You want to be able to add additional computing capacity as needed.

You have to install the components so that additional server capacity can be added without interrupting computer functioning.

What should you do?

- A. Install SQL Server on a single server in a load balancing cluster. Add an additional SQL Server server as needed.
- B. Install Project Server on a single server in a load balancing cluster. Add an additional IIS as needed.
- C. Install Views Processing on the Session Management server. Start the service as needed.
- D. Install a database for the Analysis Services repository on the SQL Server. Migrate the repository as needed.

Answer: B

Explanation:

Scalability refers to the ability of an application to provide resources to users making many concurrent requests. High scalability is desirable because increases in demand on system resources can then easily be addressed by scaling up or scaling out. Network Load Balancing distributes incoming client requests among the application servers in the NLB group to more evenly balance the workload of each server and prevent overload on any one server. The NLB cluster appears to client computers as a single, highly scalable and fault-tolerant server . In the question the discussion points to rapid growth which means that scalability is required. You thus need to install Project Server on a single server in a load balancing cluster and add an additional IIS as it becomes necessary.

Reference:

Microsoft Training and Certification: Microsoft Official Curriculum: Planning, Deploying, and Managing an Enterprise Project Management solution; Delivery Guide, Course Number 2732A, Module 2: Planning the Project Server 2003 Infrastructure, Microsoft Press, Redmond, 2003, p. 25

QUESTION 5:

You are the administrator of Microsoft Office Project Server 2003 for Certkiller .com.

You install Project Server with default settings. You create the initial Enterprise Resource Pool from your Active Directory accounts for users. Company resource planning policy requires that proposed project plans show only the skills needed to complete each task in the proposed project, so resource managers can plan resource allocation. You create a custom Enterprise Resource Outline Code 1 with values that match needed skills.

You must configure the Enterprise Project Management solution so that project managers

can create proposed project plans in compliance with the company resource planning policy.

What should you do?

- A. Open the Enterprise Resource Pool Assign each resource a value from Enterprise Resource Outline Code 1.
- B. Add Generic resources to the Enterprise Resource Pool that correspond to the values in Enterprise Resource Code 1.
- C. Add Project Server users with Project Server authentication only whose names correspond to the values in Enterprise Resource Outline Code 1.
- D. On the Customize Enterprise Fields dialog box for Enterprise Resource Outline Code 1, select the Use this code for matching generic resources option.

Answer: B

Explanation:

One makes use of generic resources as a placeholder to help when setting up resources for Project Server 2003. Use generic resources when it is not clear who will be assigned to a particular task but it is clear what skills are required.

Creating a new enterprise resource that is a non-generic work resource also creates a corresponding user with the following characteristics:

Belongs to the team Member Group

Has a blank password

Can log on

Counts toward Project Web Access CAL licenses

Reference:

Microsoft Training and Certification: Microsoft Official Curriculum: Planning, Deploying, and Managing an Enterprise Project Management solution; Delivery Guide, Course Number 2732A, Module 8: Configuring and Managing Resource and Project Data, Microsoft Press, Redmond, 2003, p. 46

QUESTION 6:

You are the administrator of the Microsoft Enterprise Project Management solution for Certkiller .com.

You install Microsoft Office Project Server 2003, Microsoft SQL Server 2000, and Views Processing on Certkiller

A. You install Analysis Services on Certkiller B. You successfully build an OLAP cube. Management wants project managers to access Portfolio Analyzer views in Project Server.

You have to configure your servers so that project managers can access the Portfolio Analyzer views in Project Server.

What should you do?

- A. Add Certkiller B to the list of trusted sites on Certkiller A.
- B. Add a role to the Portfolio Analyzer cube on Certkiller B. Add Everyone to the role.

- C. Configure the MSOLAP virtual directory on Certkiller B for Anonymous Access.
- D. Run PSComPlus.exe on Certkiller
- A. Enter a domain administrator account for the OLAP Component Service.

Answer: B

Explanation:

SQL Analysis Services provides the OLAP database and processing capabilities used by Project Server. SQL Analysis Services is required for using the Portfolio Analyzer feature of Project Server. You need to add a role to the Portfolio Analyzer cube on Certkiller B and add the Everyone group to the role.

Reference:

Microsoft Training and Certification: Microsoft Official Curriculum: Planning, Deploying, and Managing an Enterprise Project Management solution; Delivery Guide, Course Number 2732A, Module 2: Planning the Project Server 2003 Infrastructure, Microsoft Press, Redmond, 2003, p. 29

QUESTION 7:

You are the administrator of the Microsoft Enterprise Project Management solution for Certkiller .com.

Certkiller .com wants to use Microsoft Office Project Server 2003. You plan to install Microsoft SQL Server 2000 and Analysis Services on Certkiller

- A. You plan to install Project Server and Session Manager on Certkiller B. You plan to install the Views Processing service on Certkiller C.
- You have to prepare the servers so that you can install Views Processing on Certkiller C. What should you do?

- A. Add Certkiller B to the list of trusted servers on Certkiller C.
- B. Create a share for the ViewDrop directory on Certkiller B.
- C. Create a domain user called "VPAdmin." Use this VPAdmin account during the setup program on Certkiller C.
- D. Run ProxyCfg.exe on Certkiller B. Add Certkiller C to the list of bypassed server.

Answer: C

Explanation:

When you want to install Views Processing there should be already be logon names, passwords and other configuration requirements that will allow the installation to take place. For this setting up of the requirements, you should have a domain user account. You should use the descriptions provided during the installation of Project Server 2003 as a guide during the Project Server Setup Wizard.

Reference:

Microsoft Training and Certification: Microsoft Official Curriculum: Planning, Deploying, and

Managing an Enterprise Project Management solution; Delivery Guide, Course Number 2732A, Module 4: Implementing Project Server, Microsoft Press, Redmond, 2003, pp. 4-5

QUESTION 8:

You are the administrator of the Microsoft Enterprise Project Management solution for Certkiller .com.

Certkiller .com manages 500 projects by using the Enterprise Project Management solution for Microsoft Office Project Server 2003. Most projects are updated once each month.

Management requests that Resource Availability views be refreshed each day. You install the Enterprise Project Management solution on two servers, Certkiller 1 and Certkiller 2, which have identical hardware.

You need to distribute the Enterprise Project Management server components on Certkiller 1 and Certkiller 2 to minimize the time it takes to refresh Resource Availability views.

What should you do?

- A. Set up Microsoft SQL Server 2000, Analysis Services, Microsoft Windows SharePoint Services, Project Server, Views Processing, and Session Management on Certkiller 1. Install SQL Server on Certkiller 2 to store the Analysis Services repository.
- B. Set up SQL Server, Analysis Services, Views Processing, and Session Management on Certkiller 1. Install Project Server and Windows SharePoint Services on Certkiller 2.
- C. Set up SQL Server, Windows SharePoint Services, Project Server, Views Processing and Session Management on Certkiller 1. Install Analysis Services on Certkiller 2.
- D. Set up SQL Server, Analysis Services, Windows SharePoint Services, Project Server, and Session Management on Certkiller 1. Install Views Processing on Certkiller 2.

Answer: D

Explanation:

If you will be doing a multiple-server installation where the Project Server Front End, Session Manager, and Views Processing components will be on different computers, then you must install the Views Processing/Session Manager components on their servers before installing the Project Server Front End components on its server. One of the setup requirements is to have Views Processing on a separate server.

When projects are published to the Microsoft Project Server, a copy of the project is uploaded and is used to create project view data. This process consumes a large share of network resources because it must open the project in the Microsoft Project OLE DB provider and save data from which views will be built. You can offload this service to improve the scalability and performance of a single IIS-based server running Microsoft Project Server, or of a farm of IIS-based servers. If the Project Server 2003 front end computer is deployed in a Network Load Balancing cluster then this service must be moved to a computer outside the Network Load Balancing cluster.

Reference:

Microsoft Training and Certification: Microsoft Official Curriculum: Planning, Deploying, and

Managing an Enterprise Project Management solution; Delivery Guide, Course Number 2732A, Module 4: Implementing Project Server, Microsoft Press, Redmond, 2003, pp. 4-5

QUESTION 9:

You are the administrator of the Microsoft Enterprise Project Management solution for Certkiller .com.

You install Microsoft SQL Server 2000 and Analysis Services on Certkiller

A. You install

Microsoft Office Project Server 2003 on Certkiller B. You install Microsoft Windows Server 2003 with default settings on Certkiller C. You plan to install Microsoft Windows

SharePoint Services on Certkiller C.

You have to configure Certkiller C so that Windows SharePoint Services can be installed and configured.

What should you do?

(Each correct answer presents part of the solution. Choose two.)

A. Install IIS.

B. Change the default Web site port from 80 to 90.

C. Reset the password for the IUSR_ Certkiller C account.

D. Remove enhanced Microsoft Internet Explorer security.

E. Run ProxyCfg.exe. Add Certkiller B to the list of bypassed servers.

Answer: A, E

Explanation:

You can configure SharePoint Portal Server to use a proxy server when it creates indexes of external Web sites. Using a proxy server enhances the security of your intranet by preventing unauthorized access by someone on the Internet. A proxy server also enhances performance by caching recently accessed Web pages, minimizing download time. Installing IIS and running Proxycfg and then adding Certkiller B to the list of bypassed servers, will result in Certkiller C being prepared to have Windows Sharepoint Services installed and configured.

Reference:

Microsoft Sharepoint Portal Server Administrator's Help

QUESTION 10:

You are the administrator of the Microsoft Enterprise Project Management solution for Certkiller .com.

Certkiller .com uses Microsoft Office Project Server 2003. You install Project Server, Views Processing, and Session Management on a Server, APPServer. You install Microsoft SQL Server 2000 on a second server, DBServer. You install Microsoft Windows SharePoint Services on a third server, Server1, and you connect Project Server to it.

Certkiller .com policy requires all servers to indicate their function in the server name. You change the name of Server1 to "WSSServer." Users report that subwebs are not created when they save a new project.

You have to configure the servers so that subwebs can be created successfully for new projects.

What should you do?

(Each correct answer presents part of the solution. Choose two.)

- A. Run Wsswiz.exe on WSSServer.
- B. Add WSSServer to the list of trusted sites on APPServer.
- C. Run ProxyCfg.exe on APPServer. Add WSSServer to the list of bypassed server.
- D. Change the connection information in Project Server on APPServer to point to WSSServer.
- E. Delete the Windows SharePoint Services virtual site on WSSServer. Recreate the virtual site.

Answer: C, D

Explanation:

A Microsoft Project WSS subweb must be created for each project. The subweb creates a document space, within which Project Server stores documents and issues relating to that project. Following the situation outlined in the question it follows that the server was only renamed, you thus need to run ProxyCfg.exe on the APPServer and then add WSSServer to the list of bypassed servers as well as change the connection information in Project Server on APPServer to point to WSSServer.

Reference:

Carl Chatfield and Timothy Johnson, Microsoft Office Project 2003 Step by Step, Microsoft Press, Redmond, 2004, Chapter 23: Managing Risks, Issues, and Documents with Project Server, p. 463

QUESTION 11:

You are the administrator of the Microsoft Enterprise Project Management solution for Certkiller .com.

You decide to implement a pilot installation of Microsoft Office Project Server 2003.

Project Server is installed with default security settings. All Project Server users are added as Team Members. Project managers need full access to all projects. Project managers are members of the Project Manager group.

You must configure Project Server to allow members of the Project Manager group full access to all projects.

What should you do?

- A. Apply the Project Manager Security Template to the Project Manager group.
- B. Select the All current and future projects in Project Server option in the My Projects category.
- C. Change the My Organization category to allow users in this category to view all projects they manage.
- D. Create a Project Manager category with the option set to view all current and future projects in Project Server.

Answer: B

Explanation:

One Selects the All current and future projects in the Project Server database to allow users who have permissions to this category to see all current and future projects in the Project Server database.

If you allow or deny permissions at the organizational level, all users within the organization are affected regardless of permissions set elsewhere. Only a single organization exists for each Project Server installation.

Reference:

Microsoft Corporation, Microsoft Office Project Server 2003 Administrator's Guide, Microsoft Press, Redmond, 2003, p. 52

QUESTION 12:

You are the network administrator for Certkiller .com.

You install Microsoft Office Project Server 2003, Views Processing, and Session Management on Certkiller 1. You install Microsoft SQL Server 2000 and Analysis Services on Certkiller 2. Certkiller .com wants to use Microsoft Windows SharePoint Services for Risk and Issue management. You install Windows Server 2003 on a new server, Certkiller 3. You enable IIS. You create a local account called "WSSAdmin." You add the account to the local Administrators group.

You have to implement Windows SharePoint Services on Certkiller 3 so that Certkiller 3 can be used for Project Server.

What should you do?

(Each correct answer presents part of the solution. Choose two.)

- A. Run Setupsts.exe.
- B. Run Wsswiz.exe.
- C. Start the Internet Information Manager. Change the Default Web site port to 90.
- D. Create a DSN that points to the SQL Server on Certkiller 2.
- E. Create a domain user called "WSSAdmin." Add the new domain user to the domain Administrators group.

Answer: A, B

Explanation

: WSSWIZ.EXE configures Windows SharePoint Services for Project Server 2003 by applying the custom templates required by Project Server 2003. The Project Workspace site template is only available when you use the Windows SharePoint Services Configuration Wizard (WSSWiz.exe) to configure Windows ShareServices for use with Project Server 2003.

When installing Windows Sharepoint Services you use the setupsts.exe command.

Reference:

Microsoft Corporation, Microsoft Office Project Server 2003 Administrator's Guide, Microsoft Press, Redmond, 2003, p. 144

QUESTION 13:

You are the administrator of Microsoft Office Project Server 2003 for Certkiller .com.

You install a pilot installation of Project Server for Certkiller .com. Project Managers develop several projects in the pilot that use resources not stored in the Enterprise Resource Pool. You install the production installation of Project Server on a separate hardware platform. You build a new Enterprise Resource Pool by using Windows User accounts for all resources in the company.

Management wants to move some of the projects from the pilot installation to the production installation. Management wants reports from projects and the non-project time recorded in the Project Server pilot installation to be incorporated into the production project server. You save the projects from the pilot Project Server to a shared folder on your network.

You must move projects from the pilot installation to the production installation and maintain any actual hours recorded in the pilot installation.
What should you do?

- A. Open the projects from the shared folder. Save the projects to the new project server. Add the existing resources into the production project server as Project Server accounts. Merge the Project Server resources into the Enterprise Resource Pool.
- B. Open the projects from the shared folder. Save the projects to the new project server. Replace existing resources with resources from the production project server.
- C. Import the projects from the shared folder into the production project server. Import the resources for those projects into the production installation. Merge the pilot resources into the resources in the Enterprise Resources Pool.
- D. Import the projects from the shared folder into the production project server. Match existing resources with resources in the Enterprise Resources Pool.

Answer: D

Explanation:

When using a Project Server-based enterprise project management system, an Enterprise Resource Pool is a central repository of generic and work resources that can be shared by all projects published to Project Server. Since Management wants reports from projects and the non-project time recorded in the Project Server pilot installation to be incorporated into the production project server, you should make use of option D to maintain actual hours recorded in the pilot installation when importing it into the production installation.

QUESTION 14:

You are the administrator of the Microsoft Enterprise Project Management solution for Certkiller .com.

You install Microsoft Office Project Server 2003 and Microsoft Windows SharePoint Services. Project managers upload documents to the Public Document site. One month later, Project managers report that they can no longer access the Public Documents site by using Microsoft Project Professional or by using Microsoft Office Project Web Access. You check in Microsoft Enterprise Manager for the SQL Server. You see that the Public Documents site for the Windows SharePoint Services database is still valid. You verify that all Project Server service accounts are active.

You must ensure project managers can access the Project Server Public Documents site. What should you do?

- A. Set the Windows SharePoint Service sites to be automatically provisioned.
- B. Run the PSComPlus.exe utility.
- C. Add the Project Manager group to the My Organization security category.
- D. Synchronize the Administrator accounts in Project Web Access.

Answer: B

Explanation : There are two places in Microsoft Project Server Setup where you are asked for Windows account information: at the "Enter Analysis Services connection information" page and the "Enter account information for Windows SharePoint Services (continued)" page. This account information is used to generate the COM+ packages Microsoft Project Server uses in order to start other processes such as creating OLAP cubes or administering the SharePoint server. Thus it follows that if you want to ensure that project managers can access the Project Server Public Documents site you should run the PSComPlus.exe utility.

Reference:

Microsoft Training and Certification: Microsoft Official Curriculum: Planning, Deploying, and Managing an Enterprise Project Management solution; Delivery Guide, Course Number 2732A, Module 3: Installing and Configuring Project System Servers, Microsoft Press, Redmond, 2003, p. 1

QUESTION 15:

You are the administrator of the Microsoft Enterprise Project Management solution for Certkiller .com.

Certkiller .com plans to use Microsoft Office Project Server 2003 to manage all projects and recourses. Management wants to save all project documents centrally and to track Issues and Risks. External users who have Project Server accounts must be able to access their documents through the browser by connecting through your standard port for HTTP connection. You install Project Server and Session Management on Server1, which runs Microsoft Windows Advanced Server 2000. You install Microsoft SQL 2000, Analysis Services, and Views Processing on Server2, which runs Windows Server 2003.

You must install Microsoft Windows SharePoint Services so that Project Server can be connected to it.

What should you do?

(Each correct answer presents part of the solution. Choose two.)

- A. Run Proxy.Cfg.exe on Server1. Run PSComPlus.exe on Server1.
- B. Run ProxyCfg.exe on Server2. Run PSComPlus.exe on Server2.
- C. Create a domain account called "WSSADMIN". Add the account to the Administrators group on Server1.
- D. Create a domain account called "WSSADMIN". Add the account to the Administrator group on Server2. Run Setup.exe on Server2. Run Wsswiz.exe on Server2.
- E. Create a local user called "WSSADMIN" who is a member of the Administrators group on

Server1. Run Setupsts.exe on Server1. Run Wsswiz.exe on Server1.

Answer: A, C

Explanation:

If you choose to enter Windows SharePoint Services connection information at a later time, as is the case in this question, you must run the pscomplus.exe utility to set the user account and password information.

A domain account added to the Administrators group, will further ensure that Project server can be connected to it.

Reference:

Microsoft Training and Certification: Microsoft Official Curriculum: Planning, Deploying, and Managing an Enterprise Project Management solution; Delivery Guide, Course Number 2732A, Module 4: Implementing Project Server, Microsoft Press, Redmond, 2003, pp. 10-12

QUESTION 16:

You are the administrator of the Microsoft Enterprise Project Management solution for Certkiller .com.

You install Microsoft Office Project Server 2003 and Microsoft Windows SharePoint Services. The director of the Project Management Office posts documents to the Public Documents site of the Project Server. The director requires that documents for certain existing projects be posted to each project's Document site. Project managers save and publish project plans successfully. Project managers are unable to connect to their Document site. You should check the Microsoft SQL Server 2000 server and determine that no project sites have been added to the Windows SharePoint Services database.

By using the least administrative effort, you must ensure that Windows SharePoint Services project sites are created for the projects that are already published.

What should you do?

- A. Extend the default Web site.
- B. Select each project ID and manually create the site.
- C. In IIS, enable Basic Authentication for the Windows SharePoint Services default Web sites.
- D. Select the option to automatically create a team Web site when a project is published in Microsoft Office Project Web Access.

Answer: B

Explanation:

If you do not specify a path name for a project in the Site address box, a Windows SharePoint Services site does not exist for that project. You can create and delete Windows SharePoint Services sites, as well as update or remove the Windows SharePoint Services URLs that are associated with Project Server sites. It could be that there was no path name specified for these projects that are already published. You can manually create a Windows SharePoint Services site by using either of the following options on the Manage Windows SharePoint Services sites page in Project Web Access

Reference:

Microsoft Corporation, Microsoft Office Project Server 2003 Administrator's Guide, Microsoft Press, Redmond, 2003, p. 128

QUESTION 17:

You are the administrator of the Microsoft Enterprise Project Management solution for Certkiller .com.

You plan to install Microsoft Office Project Server 2003 on two servers, Certkiller 1 and Certkiller 2. You create the necessary Project Server service accounts as domain accounts. On Certkiller 1, you install Microsoft SQL Server 2000 with default settings, Analysis Services, and the most up-to-date service packs. You plan to install Project Server and Microsoft Windows SharePoint Services on Certkiller 2.

You must configure Certkiller 1 to ensure that Project Server and Windows SharePoint Services can be installed on Certkiller 2.

What should you do?

- A. On Certkiller 1, right-click Linked Servers in the Security section of Enterprise Manager. Click New Linked Server and then enter " Certkiller 2".
- B. Add a local user account called "MSProjectServerUser" on Certkiller 1. In the Security section of Enterprise Manager, add the account as a Login.
- C. Edit the SQL Server registration properties to use SQL Server authentication.
- D. Modify the SQL Server properties to use SQL Server and Windows as the authentication method.

Answer: D

Explanation:

Portfolio Analyzer Portfolio Analyzer requires Windows authentication because it uses SQL server 2000 Analysis Server.

You can integrate Project Server 2003 with Windows SharePoint Services to provide enhanced functionality for issue and risk tracking and a documentation library. Windows SharePoint Services uses SQL Server to store documents and other data, and allows for version control. Windows authentication is required to access Windows SharePoint Services features.

Reference:

Microsoft Training and Certification: Microsoft Official Curriculum: Planning, Deploying, and Managing an Enterprise Project Management solution; Delivery Guide, Course Number 2732A, Module 2: Planning the Project Server 2003 Infrastructure, Microsoft Press, Redmond, 2003, p. 13

QUESTION 18:

You are the administrator of the Microsoft Enterprise Project Management solution for Certkiller .com.

Certkiller .com uses Microsoft Office Project Server 2003 to manage 700 projects. The company's 300 project managers update their projects every two days. Management

requests access to portfolio Analyzer data that are updated every night. You distribute the Enterprise Project Management solution over five servers. You install Microsoft Windows SharePoint Services on Server1, Views Processing on Server2, Microsoft SQL Server 2000 on Server3, Analysis Services on Server4, and Project Server on Server5. You install an additional SQL Server server, Server6, to improve performance.

You need to configure Server6 to provide maximum performance.

What should you do?

- A. Create and configure a separate database for the View Processing tables on Server6.
- B. Link Server6 to Server3. Create a separate database on Server6. Move all views from the Project Server database to this separate database.
- C. Link Server6 to Server3. Move the stored procedures to a separate database on the second SQL Server.
- D. Migrate the Analysis Services repository to Server6.

Answer: A

Explanation

: When SQL Server 2000 Analysis Services is installed on a different computer than Project Server 2003, the Decision Support Objects (DSO) component of Analysis Services must be installed on the Project Server 2003 computer and the Views Processing server. Microsoft SQL Server Analysis Services is required in order to use the Portfolio Analyzer feature of Microsoft Office Project Server 2003.

Reference:

Microsoft Training and Certification: Microsoft Official Curriculum: Planning, Deploying, and Managing an Enterprise Project Management solution; Delivery Guide, Course Number 2732A, Module 3: Installing and Configuring Project System Servers, Microsoft Press, Redmond, 2003, p. 14

QUESTION 19:

You are the administrator of Certkiller .com's network.

Certkiller .com's network is a Microsoft Windows 2000 Active Directory domain named "Domain1." Certkiller .com plans to use Microsoft Project 2003 to manage all projects and resources. You plan a distrusted setup on three servers that run Microsoft Windows Server 2003.

You create a domain user account named "VPAdmin." You install Microsoft SQL Server 2000 and Microsoft Windows Share Point Services on Certkiller 1. You install Views Processing on Certkiller 2. You enter the user account named "domain1\VPAdmin." To access the ViewDrop share. You plan to install the Microsoft Office Project Server 2003 front end on Certkiller 3 only.

You must prepare the servers so that the Project Server front end can be installed on Certkiller 3.

What should you do?

- A. Create a local user account named "VPAdmin" on Certkiller 3 with the same password as the domain1 \VPAdmin user account.

- B. Run Setupdb.cmd from the Project Server CD-ROM. Create the appropriate logons on Certkiller 1. Add the logons to the appropriate roles in the database.
- C. Install Session Management on an available server.
- D. Remove Microsoft Internet Explorer's Enhanced Security component from Certkiller 3.

Answer: C

Explanation:

The Session Management service's purpose is to maintain session state information for Project Web Access users. This service thus provides a persistence of your logon information occurs because you have a session with the site that 'knows' you have logged in with a certain set of credentials that grant you access to the site. Without sessions to track your credentials, you would need to give your username and password again every time you clicked a link that took you to a new page on the site. Since you are planning a distrusted setup on the three servers, you need to install Session Management if you are to install Microsoft Office Project Server 2003 front end on Certkiller 3 only.

Reference:

Microsoft Training and Certification: Microsoft Official Curriculum: Planning, Deploying, and Managing an Enterprise Project Management solution; Delivery Guide, Course Number 2732A, Module 2: Planning the Project Server 2003 Infrastructure, Microsoft Press, Redmond, 2003, p. 14

QUESTION 20:

You are the administrator of the Microsoft Enterprise Project Management solution for Certkiller .com.

Certkiller .com plans to use Microsoft Office Project Server 2003 to manage 800 projects. Management requests that these projects be updated every two to three days. The data for Portfolio Analyzer views are updated every night. You anticipate a high workload during the OLAP cube creation. You can use an existing server that runs Microsoft SQL Server 2000. You plan to set up Certkiller A for Project Server, Certkiller B for Analysis Services, and Certkiller C for Views Processing and Session Management.

You need to prepare the servers so that OLAP cube creation functions properly in your Enterprise Project Management solution.

What should you do?

(Each correct answer presents part of the solution. Choose two.)

- A. Create an identical user on both Certkiller A and Certkiller B. Add the user to the OLAP Administrators group on Certkiller B.
- B. Create an identical user on both Certkiller B and Certkiller C. Add the user to the OLAP Administrators group on Certkiller B.
- C. Install Microsoft Active Data Objects on Certkiller B.
- D. Install Microsoft Data Access Components on Certkiller B.
- E. Install Microsoft Decision Support Objects on Certkiller A that runs Microsoft Project Server and on Certkiller C which runs Views Processing.

Answer: B, E

Explanation:

The OLAP administrators group is only on the SQL server.

When SQL Server 2000 Analysis Services is installed on a different computer than Project Server 2003, the Decision Support Objects (DSO) component of Analysis Services must be installed on the Project Server 2003 computer and the Views Processing server. Microsoft SQL Server Analysis Services is required in order to use the Portfolio Analyzer feature of Microsoft Office Project Server 2003. You must use the DSO component of Analysis Services for multiple server deployments, however for single server installations, DSO is not necessary. Decision support objects must be installed on both the Project Server 2003 and the Active Directory server. Thus installing decision support objects, provides access to the Project Server 2003 enterprise when multiple servers are used. Options B and E should comply with the requirements of this question.

Reference:

Microsoft Training and Certification: Microsoft Official Curriculum: Planning, Deploying, and Managing an Enterprise Project Management solution; Delivery Guide, Course Number 2732A, Module 3: Installing and Configuring Project System Servers, Microsoft Press, Redmond, 2003, pp. 14, 16

QUESTION 21:

You are the administrator of Microsoft Office Project Server 2003 for Certkiller .com. During installation of Project Server, you choose not to install the Project Server Sample Data. After completing the installation of Project Server, you decide to install the sample database. You copy the files from the \Support\Sample\1033 folder to the \Microsoft Office Project Server 2003\Sample Data\1033 folder on the server. You need to install the sample database by using the least administrative effort. What should you do?

- A. Run SampCfg.exe with the appropriate parameter.
- B. Run Osql.exe with Eglobal.sql.
- C. Run SetupDb.cmd from the support folder of the Project Server CD-ROM.
- D. Restore the sample database over the existing Project Server database in the SQL Enterprise Manager.

Answer: A

Explanation:

If you did not select the Project Server Sample Data component during Project Server Setup, you can manually copy the files to the server. On the Project Server 2003 CD, copy the files from the \Support\Sample\1033 folder to \Microsoft Office Project Server 2003\Sample Data\1033 on your server. To restore and configure the data, type sampcfg.exe /r at the command line and to back up your data, type sampcfg.exe /b at the command line. This would represent the least amount of administrative effort.

Reference:

Microsoft Corporation, Microsoft Office Project Server 2003 Installation Guide, Microsoft Press, Redmond, 2003, p. 212

QUESTION 22:

You are the administrator of the Microsoft Enterprise Project Management solution for Certkiller .com.

Certkiller .com's database server, Certkiller 1, runs Microsoft SQL Server 2000 Standard Edition and Microsoft Windows 2000 Advanced Server with the most up-to-date service packs installed. Certkiller .com decides to implement Microsoft Office Project Server 2003. You want to implement the Issues Tracking functionality in Project Server. You purchase a new server, Certkiller 2, for Project Server and Issues Tracking with Microsoft Windows 2000 Advanced Server pre-installed. You create the necessary service accounts for the installation of Project Server.

You must perform pre-installation system configurations to allow the Issues Tracking functionality of Project Server.

What should you do?

(Each correct answer presents part of the solution. Choose two.)

- A. Upgrade Certkiller 2 to the Windows Server 2003 operating system.
- B. Upgrade Certkiller 1 to the Enterprise edition of SQL Server 2000.
- C. In Enterprise Manager, add SQL logins named "MSProjectServerUser" and "MSProjectUser", both with Process Administrator roles.
- D. Install Windows SharePoint Services. Run Wsswiz.exe from the Project Server 2003 CD-ROM.

Answer: A, D

Explanation:

Windows SharePoint Services provides risk and issues tracking and a document library for each project published to Project Server. In addition to tracking risks, issues, and documents on a per-project basis, you can associate them with multiple projects or even with each other. You thus need to upgrade Certkiller 2 to Windows Server 2003 and install Windows Sharepoint Services to be able to perform pre-installation system configurations to allow for Issues and Tracking functionality of Project Server.

Reference:

Microsoft Training and Certification: Microsoft Official Curriculum: Planning, Deploying, and Managing an Enterprise Project Management solution; Delivery Guide, Course Number 2732A, Module 10: Administering an EPM Solution, Microsoft Press, Redmond, 2003, p. 4

QUESTION 23:

You are the administrator of the Microsoft Enterprise Project Management solution for Certkiller .com.

Certkiller .com uses Novell Netware 5.1 as its network operating system. You install Microsoft SQL Server 2000 and Analysis Services on a Microsoft Windows Server 2003

server, Certkiller 1. You install Windows Server 2000 on Certkiller 2. You want to install Microsoft Project Server 2003 on Certkiller 2. You enter the database server name " Certkiller 1 " and the credential for the system administrator. You receive the error message shown in the exhibit.



You can successfully PING Certkiller 1 by name.

You have to prepare Certkiller 2 so that Microsoft Office Project Server 2003 can be installed.

What should you do?

- A. Create a local user with same username and password on both servers. Add this local user to the Administrators group.
- B. Enter the IP address from Certkiller 1 to the hosts file on Certkiller 2.
- C. Configure Certkiller 2 as a work group server.
- D. Run Cliconfig.exe on Certkiller 2. Set the default protocol to TCP/IP.

Answer: D

Explanation:

If the SQL Server where the Project Server database resides is configured to use a protocol other than TCP/IP, then the user may not be able to connect.

Reference:

Microsoft Training and Certification: Microsoft Official Curriculum: Planning, Deploying, and Managing an Enterprise Project Management solution; Delivery Guide, Course Number 2732A, Module 13: Troubleshooting Project Server, Microsoft Press, Redmond, 2003, p. 21

QUESTION 24:

You are the administrator of the Microsoft Enterprise Project Management solution for Certkiller .com.

You install Microsoft Office Project Server 2003 by using an existing installation of Microsoft SQL Server 2000 with Service Pack 2 on Certkiller

A. You need to provide

Portfolio Analyzer functionality to your installation. You install Analysis Services with the most current series pack on its own server, Certkiller B. You configure Project Server to use Certkiller B for Analysis Services. You schedule Portfolio Analyzer cube creation to run each Saturday night.

On Monday when executives attempt to view Portfolio Analyzer reports from Microsoft

Project Web Access, they see the below error message:

Unable to access the Microsoft Office Project Portfolio Analyzer OLAP cube.
The cube may not exist or you may not use permissions to access the cube

You search the client computers and verify that the Microsoft Office Web Components are installed successfully. You verify that there is an Executives role on the MSP-PORTFOLIO_ANALYZER cube and that the Executives Active Director groups have access to this role. You verify that each executive is a member of the Executives Active Directory group.

You need ensure that executives can view cube data in the Portfolio Analyzer.

What should you do?

(Each correct answer presents a complete solution. Choose two.)

- A. Remove Analysis Services. Reinstall Analysis Services. Install Analysis Services Service pack 2 on Certkiller B.
- B. Install the most current service pack for Microsoft SQL Server 2000 on Certkiller A.
- C. Install SQL Server 2000 with the most current service pack on Certkiller B.
- D. Grant the Executives role access to the MSP_ASSN_FACT cube.

Answer: B, D

Explanation:

You should check your SQL Server 2000 service pack level. In order for SQL Server to work with Project Server 2003, service pack 3 must be installed. Further more, to ensure that the executive can view cube data in th Portfolio Analyzer you should grant their specific role access to the MSP_ASSN_FACT cube.

Reference:

Microsoft Training and Certification: Microsoft Official Curriculum: Planning, Deploying, and Managing an Enterprise Project Management solution; Delivery Guide, Course Number 2732A, Module 3: Installing and Configuring Project System Servers, Microsoft Press, Redmond, 2003, p. 14

QUESTION 25:

You are the administrator of the Microsoft Enterprise Project Management solution for Certkiller .com.

You install Microsoft SQL Server 2000 on Certkiller 3. You create a database named "PS_DB". You create two SQL Server accounts named "MSProjectServerUser" and "MSProjectUser". You install Microsoft Windows 2000 Server on Certkiller 2. You want to install Session Management on Certkiller 2. You want to install Microsoft Office Project Server 2003 on Certkiller 3.

You have to install Session Management on Certkiller 2 and Project Server 2003 on Certkiller 3.

To answer, move the appropriate tasks from the list of Tasks to the list of Ordered Tasks and arrange them in the correct order. (Use only Actions that apply.)

Tasks

- Run Setup.exe from the Project Server CD-ROM on Certkiller3
- Run Setupdb.cmd from the Project Server CD-ROM on Certkiller1
- Run Setup.exe from the Project Server CD-ROM on Certkiller1
- Run Setup.exe from the Project Server CD-ROM on Certkiller2.
- Create an ODBC **DSN that points** to the PS_DB database on Certkiller2.
- Grant the MSPProjectRole and MSPProjectServerRole roles to the accounts you created.

Ordered Tasks,place here

Answer:

Tasks

- Run Setup.exe from the Project Server CD-ROM on Certkiller1.
- Create an **ODBO DSN that points** to the PS_DB database on Certkiller2.

Ordered Tasks,place here

- Run Setupdb.cmd from the Project Server CD-ROM on Certkiller1
- Grant the MSPProjectRole and MSPProjectServerRole roles to the **accounts you created**
- Run Setupexe ,rom the Project Server CD-ROM on Certkiller2.
- Run Setup.exe from the Project Server CD-ROM on Certkiller3

QUESTION 26:

You are the administrator of Microsoft Office Project Server 2003 for Certkiller .com. You install Project Server and Microsoft Office Project Professional for each project manager in Certkiller .com. A business analyst defines a requirement of a custom formula that must be available to all project managers in all projects. A programmer writes and tests a Visual Basic macro. The macro creates a custom toolbar and assigns the formula to a custom tool. The programmer embeds the macro in a Microsoft Project template file. By using the least administrative effort, you must ensure that all project managers can use the custom formula in all projects. What should you do?

- A. Copy the template file to each manager's Microsoft Office\Templates\1033 folder.
- B. Replace each manager's Global.mpt file with the template file.
- C. Use the Visual Basic Editor to import the file to the Global.mpt file.
- D. Use the organizer to copy the objects to the checked-out Enterprise.

Answer: D

Explanation:

If you check in a project that is checked out, the user who has the project checked out can then save the project to the database only as a new project. Thus using the organiser to copy the objects to the checked-out Enterprise will enable all project managers to use the customformula in all projects. This represents the least amount of administrative effort for get the required results.

Reference:

Microsoft Training and Certification: Microsoft Official Curriculum: Planning, Deploying, and Managing an Enterprise Project Management solution; Delivery Guide, Course Number 2732A, Module 9: Configuring and Managing Views and Security, Microsoft Press, Redmond, 2003, p. 19

QUESTION 27:

You are the administrator of Microsoft Office Project Server 2003 for Certkiller .com. You install Project Server. You install Microsoft Office Project Professional for each of Certkiller .com's project managers. The default Project guide is displayed when a new project is created. The Project Management Office develops a custom project guide that has three additional goal areas for all projects. No default goal areas are used. You must ensure that the custom project guide is displayed by default when a new project is created.

What should you do?

(Each correct answer presents part of the solution. Choose three.)

- A. In the Tools, Options, Interface dialog box, add the URL of the custom project guide to the Use a custom page of Microsoft Office Project Web Access. Set this URL as a default.
- B. In the Tools, Options, Interface dialog box, add the URL of the custom project guide to the Use custom content page of Project Web Access. Set this URL as default.
- C. In the Tools, Options, Interface dialog box, clear the Display Project Guide setting.
- D. Open and save all changes to the checked-out Enterprise Global.
- E. Choose Save as File, and name the project file Global.mpt.

Answer: A, B, D

Explanation:

Custom Web Access menus can easily be added, modified, and deleted by using a particular procedure. Options A, B and C represents the procedures to display the custom project guide by default whenever a new project is created.

Reference:

Microsoft Training and Certification: Microsoft Official Curriculum: Planning, Deploying, and Managing an Enterprise Project Management solution; Delivery Guide, Course Number 2732A, Module 10: Administering an EPM Solution, Microsoft Press, Redmond, 2003, pp. 21, 22

QUESTION 28:

You are the administrator of Microsoft Office Project Server 2003 for Certkiller .com. Certkiller .com uses a proprietary method for developing project schedules. Certkiller .com installs Project Server and Microsoft Office Project Professional 2003. You need to implement on-screen guidance in a project guide for Certkiller .com's proprietary method for developing project schedules. What should you do?

- A. Create a custom Gbui.xml document. Add a Goal Area and Goal Area tasks.
- B. Edit the default Gbui.xml document. Add a Goal Area and Goal Area tasks.
- C. Create a custom Gbui.xml document. Add hyperlinks to Template tasks.
- D. Edit the default Gbui.xml document. Add the hyperlinks to Template tasks.

Answer: A

Explanation:

Enterprise custom fields can be set for the project and have specific attributes. For example, a custom field can be a required field, so that users are prompted to enter information in that field. To maintain consistency across the organization and ensure that fields and their lookup tables are the same for all projects and resources, enterprise custom fields are created in Project Server 2003.

Enterprise assignment custom fields are available in the Task Usage and Resource Usage views. Thus you need to create a custom Gbui.xml document and add a Goal Area and Goal Area tasks to implement on-screen project guidance for the company's proprietary method for developing project schedules.

Reference:

Microsoft Training and Certification: Microsoft Official Curriculum: Planning, Deploying, and Managing an Enterprise Project Management solution; Delivery Guide, Course Number 2732A, Module 8: Configuring and Managing Resource and Project Data, Microsoft Press, Redmond, 2003, p. 10

QUESTION 29:

You are the administrator of Microsoft Office Project Server 2003 for Certkiller .com. Certkiller .com decides to implement Project Server. You develop a pilot installation with Project Server. After installing Project Server, you choose to install Microsoft Windows SharePoint Services on the same server. You attempt to connect to the Project Server administration pages by using Microsoft Office project Web Access. You receive the following error message: " The following file(s) have been blocked by the administrator: //projectserver/admin/admin.asp."

You need to reconfigure the server so that you can connect to the administration pages of Project Web Access. What should you do?

- A. Provide the current user with Log on Locally rights on the server.

- B. Give the Everyone group full control of the Admin.asp file.
- C. Enable Anonymous Access on the ProjectServer virtual directory.
- D. Define the ProjectServer virtual directory as an excluded path in Windows SharePoint Services.

Answer: D

Explanation:

There are two places in Microsoft Project Server Setup where you are asked for Windows account information: at the "Enter Analysis Services connection information" page and the "Enter account information for Windows SharePoint Services (continued)" page. One of the problems that can occur is one of non-connectivity. Since Project Server and Microsoft Windows Sharepoint services are installed on the same server you need to define Project server virtual directory as an excluded path in Windows Sharepoint Services.

Reference:

Microsoft Training and Certification: Microsoft Official Curriculum: Planning, Deploying, and Managing an Enterprise Project Management solution; Delivery Guide, Course Number 2732A, Module 3: Installing and Configuring Project System Servers, Microsoft Press, Redmond, 2003, p. 8

QUESTION 30:

You are the administrator of Microsoft Office Project Server 2003 for Certkiller .com. You install Project Server and Microsoft Windows SharePoint Services on a single Microsoft Windows Server 2003 server. You test Project Server and Windows SharePoint Services. You confirm that users can connect and log on to both applications successfully by using both Microsoft Office project Web Access and Microsoft Office Project Professional.

One day, users report that they cannot connect to Project Server by using either Project Professional or Project Web Access. You attempt to connect to the Project Server by using Project Web Access. You are unable to connect. You receive an error message that say that service is unavailable. You connect to the Windows SharePoint Services server and verify that the project sub webs exist and are available.

You need to ensure the users can connect to the project server by using both Project Professional and Project Web Access.

What should you do?

- A. Reset the MSP2003AppPool from the IIS console on the project server.
- B. Reset the DefaultAppPool from the IIS console on the project server.
- C. Run PSComPlus.exe on the project server.
- D. Run ProxyCfg.exe on the project server.

Answer: A

Explanation:

IIS 6.0 features include a secure connection and scalability that supplies Web access on either a single server or multiple servers to the Project Server 2003 clients: Project Professional and Project Web Access. You need to reset the MSP2003AppPool from the IIS console on the project server. You already confirmed that the project sub webs exist and are available.

Reference:

Microsoft Training and Certification: Microsoft Official Curriculum: Planning, Deploying, and Managing an Enterprise Project Management solution; Delivery Guide, Course Number 2732A, Module 3: Installing and Configuring Project System Servers, Microsoft Press, Redmond, 2003, p. 7

QUESTION 31:

You are the administrator of Certkiller .com's network.

Your company wants to use Microsoft Office Project Server 2003. You install Microsoft SQL Server 2000 on Certkiller 1. You install Project Server on Certkiller 2. You install Analysis Services on Certkiller 3. You create a local user named "OLAPAdmin" on Certkiller 3. You add this local user to the OLAP Administrators group on Certkiller 3. You want to connect Project Server to Analysis Services.

You have to configure the servers so that Project Server can successfully connect to the Analysis Server.

What should you do?

(Each correct answer presents part of the solution. Choose two.)

- A. Create a local user named "OLAPAdmin" on Certkiller 2 with the same password as the OLAPAdmin account on Certkiller 3.
- B. Create a local user named "OLAPAdmin" on Certkiller 1 with the same password as the OLAPAdmin account on Certkiller 3.
- C. Run PSComPlus.exe on Certkiller 2. Enter Certkiller 2\OLAPAdmin for the Analysis Services (OLAP) Access.
- D. Run PSComPlus.exe on Certkiller 1. Enter Certkiller 1\OLAPAdmin for the Analysis Services (OLAP) Access Identity.
- E. RunPSComPlus.exe on Certkiller 3. Enter Certkiller 3\OLAPAdmin for the Analysis Services (OLAP) Access Identity.

Answer: A, C

Explanation:

There are two places in Microsoft Project Server Setup where you are asked for Windows account information: at the "Enter Analysis Services connection information" page and the "Enter account information for Windows SharePoint Services (continued)" page. This account information is used to generate the COM+ packages Microsoft Project Server uses in order to start other processes such as creating OLAP cubes or administering the SharePoint server. Thus it follows that if you want to ensure that project managers can access the Project Server Public Documents site you should run the PSComPlus.exe utility. Under the circumstances, you should create a local user on Project

Server Certkiller 2 with the same name and password as the OLAPAdmin account on Certkiller 3 as well as run PSComPlus.exe on Certkiller 2. This will ensure that Project server can connect to the Analysis Server.

Reference:

Microsoft Training and Certification: Microsoft Official Curriculum: Planning, Deploying, and Managing an Enterprise Project Management solution; Delivery Guide, Course Number 2732A, Module 3: Installing and Configuring Project System Servers, Microsoft Press, Redmond, 2003, p. 1

QUESTION 32:

You are the administrator of the Microsoft Enterprise Project Management solution for Certkiller .com.

You need to remove some resource accounts from the project server. You select the Clean up Project Server database option on the Administration page of Microsoft Office Project Web Access. You select the account named "Susan" from the list, and click the Delete button. You receive the following error message: "Request Status: 1105. You are unable to delete Susan's account from the server."

You must ensure that you can delete Susan's account on the project server.

What should you do?

- A. Delete Susan's account from any projects published on the server.
- B. Have Susan log off the project server in Microsoft Office Project Professional and Project Web Access.
- C. Check in Susan's account from any checked-out copies of the Enterprise Resource Pool.
- D. Convert Susan's account from a Project Server account to a Windows Domain account

Answer: C

Explanation:

You cannot delete enterprise resources that are checked out. You thus need to check in Susan's account from any of the checked out copies of the Enterprise Resource Pool to make sure you can delete Susan's account on the project server.

Reference:

Microsoft Corporation, Microsoft Office Project Server 2003 Administrator's Guide, Microsoft Press, Redmond, 2003, p. 246

QUESTION 33:

You are the administrator of Microsoft Office Project Server 2003 for Certkiller .com. Certkiller .com has two locations, one in the United States (US) and one in the United Kingdom (UK). The company uses project managers based in the US only. Certkiller .com decides to add some project managers based in the UK. Certkiller .com installs a WAN to connect the two locations. UK-based project managers connect to the Project Server installation located in the US. Management indicates that the costs for UK-based projects in Project Server reports do not match the actual project costs in management's

accounting system.

You need to configure Project Server so that cost reports accurately represent the actual project costs.

What should you do?

- A. Select the Enforce single currency as specified in the enterprise global template option on the Server Configuration page of Project Server.
- B. Open the Enterprise Global template and save the template again to restore the settings to all users.
- C. Replace the Global.mpt file on each project manager's computer in the UK with the US version.
- D. Configure each project manager' computer in the UK to use a Global.mpt file stored on a network share.

Answer: A

Explanation:

It is possible to allow each project in your organization to have its own currency setting. However, this may not be practical, because each resource in the enterprise resource pool can have only a single currency associated with it. Project Server allows you to specify a single currency to be used in all projects in your organization.

Enforcing a single currency is a two-step process that involves checking out the enterprise resource global template and specifying a currency, and then enforcing that currency in Project Web Access. This option would ensure that cost reports will accurately represent the actual project cost.

Reference:

Microsoft Training and Certification: Microsoft Official Curriculum: Planning, Deploying, and Managing an Enterprise Project Management solution; Delivery Guide, Course Number 2732A, Module 9: Configuring and Managing Views and Security, Microsoft Press, Redmond, 2003, p. 11

QUESTION 34:

You are the administrator of the Microsoft Enterprise Project Management solution for Certkiller .com.

Certkiller .com uses Microsoft Project 2000. You install Microsoft SQL Server 2000 and Analysis Services on Certkiller 1. You install Microsoft Office Project Server 2003, Views Processing, and Session Management on Certkiller 2. The global.mpt file contains information you want to use in Project Server.

You want to make all views, filters, macros, and tables from the global.mpt available to all project managers.

What should you do?

- A. Start using Microsoft Project Professional 2003. Open the old global.mpt. Copy all items to the new global.mpt by using the Organize function.
- B. Open the old global.mpt. Click the Open the Enterprise Global option. Copy all items by

using the Organize function.

C. Open the old global.mpt. Save to a new project called "Enterprise Global." Publish the new Enterprise Global project.

D. Run PSMigrat.exe from the Project Server CD-ROM.

Answer: B

Explanation

: Enterprise custom fields (including their definitions and lookup tables) are stored in the Enterprise Global Template. The values entered in the enterprise custom field, however, are not stored in the Enterprise Global Template. For security purposes, users must have permission to check out the enterprise global template to change enterprise custom fields. Project Standard always uses the global template, and Project Professional uses the global template when not connected to Project Server.

Reference:

Carl Chatfield and Timothy Johnson, Microsoft Office Project 2003 Step by Step, Microsoft Press, Redmond, 2004, Chapter 18, p. 360

QUESTION 35:

You are the administrator of the Microsoft Enterprise Project Management solution for Certkiller .com.

You set up a new installation of Microsoft Office Project Server 2003. Your chief financial officer asks all project managers to enter budget data at the task level. It must be possible to summarize budget data at the project level. Budget data must exhibit Certkiller .com's standard currency. A new field must be available to all project managers for the entry of budget data.

You must ensure that a new field be made available to project managers for the entry of budget data at the task level and the new field is summarized.

What should you do?

A. Open all Enterprise Template projects. Rename a custom task field of the type "Cost." Set the Calculation for Task and Group Summary Rows option to Sum.

B. Open the Enterprise Global. Rename a custom task field of the type "Cost." Set the Calculation for Task and Group Summary Rows option to Sum.

C. Open all Enterprise projects. Rename a custom task field of the type "Cost." Set the Calculation for Task and Group Summary Rows option to Sum.

D. Open the global.mpt. Rename a custom task field of the type "Cost." Set the Calculation for Task and Group Summary Rows option to Sum. Distribute to all of your Enterprise Project Management users.

Answer: B

Explanation

: Enterprise custom fields (including their definitions and lookup tables) are stored in the Enterprise Global Template. The values entered in the enterprise custom field, however, are not stored in the Enterprise Global Template. For security purposes, users must have permission to check out the enterprise global template to change enterprise custom fields.

You can customize Enterprise Custom Fields at the project level, but you can also automatically display Enterprise Custom Field values in summary rows by specifying that summary rows be rolled up from subtask values.

Reference:

Carl Chatfield and Timothy Johnson, Microsoft Office Project 2003 Step by Step, Microsoft Press, Redmond, 2004, Chapter 18, p. 360

Microsoft Corporation, Microsoft Office Project Server 2003 Application Configuration Guide, Microsoft Press, Redmond, 2003, p. 77

QUESTION 36:

You are the administrator of Microsoft Office Project Server 2003 for Certkiller .com. Certkiller .com implements Project Server. You create a custom Gantt chart report. The chart shows only critical tasks. All project managers must access this chart for project review meetings.

You must make this chart available in the View Bar for every project manager. What should you do?

- A. Use Organizer to add the Critical filter to the Enterprise Global. Make sure that the Show in Menu option is selected.
- B. Create a custom report. Add it to the Reports in the Enterprise Global.
- C. Configure the custom view in the Enterprise Global. Make sure that the Show in Menu option is selected.
- D. Create a Project View. Add the Project View to the My Projects category.

Answer: C

Explanation

: Enterprise custom fields (including their definitions and lookup tables) are stored in the Enterprise Global Template. The values entered in the enterprise custom field, however, are not stored in the Enterprise Global Template. For security purposes, users must have permission to check out the enterprise global template to change enterprise custom fields. Project Standard always uses the global template, and Project Professional uses the global template when not connected to Project Server. However, when Project Professional is connected to Project Server, it uses the enterprise global template rather than the global template. The enterprise global template is stored within Project Server and generally provides the same services as does the global template, but on an enterprise project management scale.

Thus option C would be the solution to make sure that the chart is available in the View Bar for every project manager.

Reference:

Carl Chatfield and Timothy Johnson, Microsoft Office Project 2003 Step by Step, Microsoft Press, Redmond, 2004, Chapter 18, p. 360

QUESTION 37:

You are the administrator of the Microsoft Enterprise Project Management solution for Certkiller .com.

Certkiller .com uses Microsoft Project 2000. All project managers save their projects in a Microsoft Office Access 2003 database. The project Server 2003, Views Processing, and Session Management on Certkiller

A. You install Microsoft SQL Server 2000 and analysis Services on Certkiller B.

You must migrate all projects to the Project Server database by using the least administrative effort.

What should you do?

(Each correct answer presents part of the solution. Choose two.)

A. Import all resources by using the Import resources to Enterprise function in Microsoft Office Project Professional 2003.

B. Import all resources by using Data Transformation Services on the SQL Server.

C. Import all projects by using the Import projects to Enterprise function in Project Professional.

D. Save all projects to .mpp files by using Microsoft Project 2000. Open the .mpp files. Save the .mpp files to Project Server 2003 by using Project Professional 2003.

Answer: A, C

Explanation:

The Import Project Wizard in Project Professional 2003 migrates projects to Project Server 2003. This wizard provides data validation so that no projects or tasks are migrated with invalid values or missing required fields.

With the Import Project Wizard, you can:

? Plot local fields to enterprise custom fields.

? Plot project resources to enterprise resources, leave project resources as local, or promote project resources to enterprise resources.

? Import additional projects in the same wizard session with the same field mapping.

Options A and C represents the least amount of administrative effort when migrating projects to the Project Server database.

Reference:

Microsoft Training and Certification: Microsoft Official Curriculum: Planning, Deploying, and Managing an Enterprise Project Management solution; Delivery Guide, Course Number 2732A, Module 11: Migrating Project Data, Microsoft Press, Redmond, 2003, p. 9

QUESTION 38:

You are the administrator of Microsoft Office Project Server 2003 for Certkiller .com.

Project managers currently use Microsoft Project Standard 2002. All current project plans and resource information are in .mpp files on a network share folder. Certkiller .com implements Project Server and mandates Microsoft Office Project Professional 2003 as the client software for project managers.

You must create the Enterprise Resource Pool by using information from the .mpp files.

What should you do?

A. Import the resources of each project file to the Enterprise Resource Pool.

- B. Open the project files while connected as Administrator. Add the Windows NT account information for the resources, and save as an Enterprise project.
- C. Create a resource share file from all project plans. Run a Simple Object Access Protocol (SOAP) call with the ProjectDataService (PDS) method, PSNewUser.
- D. Copy each project's resource data. Paste the resource data into the Enterprise Global resource sheet.

Answer: A

Explanation:

You can use the group information already existing in the Active Directory groups to create the Enterprise Resource Pool in Project Server 2003. By using the Active Directory connector tool, you can create the Enterprise Resource Pool in Project Server 2003 by synchronizing the group information already existing in the Active Directory groups. Since all current plans and projects are in .mmp files on a network share folder you need to import all those files to the Enterprise Resource Pool if you are to create the Enterprise Resource Pool using the information from those .mmp files.

There is no need to open the project files to add the information to the Enterprise Resource Pool as described in this option. All that is required is to import the appropriate resources of each project file.

Reference:

Microsoft Training and Certification: Microsoft Official Curriculum: Planning, Deploying, and Managing an Enterprise Project Management solution; Delivery Guide, Course Number 2732A, Module 9: Configuring and Managing Views and Security, Microsoft Press, Redmond, 2003, p. 82

QUESTION 39:

You are the administrator of Microsoft Office Project Server 2003 for Certkiller .com. You install a pilot Project Server. Participants in the pilot use Project Server accounts to access the project server. Several projects are saved to the pilot installation of Project Server.

You implement a production Project Server. You build a new Enterprise Resource Pool. You assign Windows User Accounts to all company resources. Executives request that project time entries made during the pilot be available in the new Project Server system. You must move projects and actual work data saved on the pilot installation of Project Server to the production installation of Project Server.

What should you do?

- A. Open the projects from the pilot server. Save the projects to the new server. Select the Replace option to replace existing resources with resources from the new Project Server installation.
- B. Use the Resource Import wizard to import the resources from the pilot projects. Open each pilot project and save it to the server. Select the Replace option to replace existing resources with those imported from the pilot Project Server installation.
- C. Use the Projects Import wizard to import the projects from the pilot Project Server installation

to the live Project Server installation. Choose the Import resource to Enterprise option for each resource in the pilot Project Server installation. Merge the pilot resources into the resources in the Enterprise Resource Pool.

D. Use the Projects Import wizard to import the projects from the pilot system into the live system. Choose the Map to Enterprise resource option for each resource in the pilot system.

Answer: D

Explanation:

If you use the Import Projects into Enterprise wizard to import specific projects, a screen displays the list of local resources within that file. It offers an option to map a resource to an existing enterprise resource or to import it into the pool as a new enterprise resource.

Importing as a new resource can be a riskier approach because the "Import resource to enterprise" option is not the default. That means that over the course of several project imports, it could be possible to forget to set this option. Then some project resources would not be imported properly.

Reference:

Microsoft Training and Certification: Microsoft Official Curriculum: Planning, Deploying, and Managing an Enterprise Project Management solution; Delivery Guide, Course Number 2732A, Module 8: Configuring and Managing Resource and Project Data, Microsoft Press, Redmond, 2003, p. 37

QUESTION 40:

You are the administrator of Microsoft Office Project Server 2003 for Certkiller .com.

A business analyst defines a requirement to update automatically the Enterprise Resource Pool from Certkiller .com's legacy database application for human resources. A developer writes a Visual Basic application that updates the Enterprise Resource Pool by making calls to the Project Data Service.

The developer has successfully tested the application on her development computer. You are to install the executable file on the server and create a scheduled task to run the application periodically. Before you create the task, you manually run the custom application on the server. The custom application does not update the Enterprise Resource Pool.

You must configure the server to ensure that the custom application can update the Enterprise Resource Pool.

What should you do?

- A. Register the Microsoft Simple Object Access Protocol (SOAP) Type Library.
- B. Generate a Web service description language (.wsdl) and a Web services meta language (.wsml) file.
- C. Create a universal data link (.udl) file.
- D. Create an ODBC System DSN.

Answer: A

Explanation:

Shared Documents is the default library. A shared workspace can be connected to a document library that is associated with project that is saved to the Project Server database and its related Project Workspace. Shared Workspaces are hosted on a server running Windows SharePoint Services. However, to ensure that the custom application can update the Enterprise Resource Pool, you must register the SOAP Type Library.

Reference:

Microsoft Corporation, Microsoft Office Project Server 2003 Security Group Guide, Microsoft Press, Redmond, 2003, p. 350

QUESTION 41:

You are the administrator of Microsoft Office Project Server 2003 for Certkiller .com. Certkiller .com uses Microsoft Exchange Server with Microsoft Outlook. Project Server is installed. There are no company Project Server users defined and no resources in the Enterprise Resource Pool. The Project Management Office determines that all employees who are available for assignment as resources should become Project Team Members. By expending the least administrative effort, you must create the Enterprise Resource Pool and allow logon capabilities for these Project Team Members. What should you do?

- A. Add the employees as Project Server users in the Team Member group by selecting Windows NT Authentication as the logon method.
- B. Open the Enterprise Resource Pool. Use the Project Guide to add resources from the company address book
- C. Use Simple Object Access Protocol (SOAP) and the ProjectDataService (PDS) method, PSNewUser, to add company resources to the Enterprise Resource Pool
- D. Add the employees as Project Server users. Set permission by using the Team Member security template.

Answer: B

Explanation:

The Enterprise Resource Pool is a centralized pool of resources that is stored in the Project Server database and can be accessed by Project Professional users who are assigning resources to enterprise projects. By adding the company address book you will allow logon capabilities for these employees. This represents the least amount of administrative effort given the circumstances as described in the question.

Reference:

Microsoft Corporation, Microsoft Office Project Server 2003 Administrator's Guide, Microsoft Press, Redmond, 2003, p. 106

QUESTION 42:

You are the administrator of the Microsoft Enterprise Project Management solution for Certkiller .com.

Certkiller .com's written security policy forbids sending user passwords in clear text. Microsoft SQL Server 2000 is configured to encrypt its communication. The written security policy also forbids contractors from having Active Directory accounts. You install Microsoft Office Project Server 2003 with default settings. You create the initial Enterprise Resource Pool from employee data in Active Directory. You add contractors to the Enterprise Resource Pool. You set up contractors as Microsoft Office Project Web Access users with Project Server accounts.

You must configure the Microsoft Enterprise Project Management solution to allow the contractor logon capability in accordance with Certkiller .com's security policy.

What should you do?

- A. In the Microsoft Internet Explorer browser windows reset the custom Internet security level for Local Intranets to the High setting.
- B. Set the Project Server virtual directory in IIS to use SSL.
- C. On the SQL server where the Project Server database resides, set the MSProjectServerUser role to use Windows Authentication.
- D. On the server where Project Server data reside, change the SQL Server Authentication mode to Windows only.

Answer: B

Explanation:

IIS is necessary for Internet connectivity in the enterprise. SSL or Secure Sockets Layer must be configured on IIS 6.0 to work with Project Server 2003. SSL encrypts the data that flows between client browsers and Web servers. You can use this encryption to protect sensitive information such as passwords and system information. Making use of SSL and setting the Project Server virtual directory in IIS should comply with the company's security policy.

Reference:

Microsoft Training and Certification: Microsoft Official Curriculum: Planning, Deploying, and Managing an Enterprise Project Management solution; Delivery Guide, Course Number 2732A, Module 3: Installing and Configuring Project System Servers, Microsoft Press, Redmond, 2003, p. 7

QUESTION 43:

You are the administrator of the Microsoft Enterprise Project Management solution for Certkiller .com.

Certkiller .com plans to use the Enterprise Project Management solution for project management. You plan to set up Analysis Services on a separate server. Users without domain accounts authenticate with Project Server accounts by using an extranet. Management wants to enable these external users to access Portfolio Analyzer views in Microsoft Office Project Server 2003.

You have to implement the Enterprise Project Management solution so that users without domain accounts can access Portfolio Analyzer views.

What should you do?

(Each correct answer presents part of the solution. Choose two.)

- A. Set up Analysis Services to run under the Administrator account instead of Local System.
- B. Configure IIS on the Analysis Services server to provide MSOLAP access.
- C. Set up the Views processing service on a second server.
- D. Create a second OLAP cube. Add a cube role with access for Everyone.
- E. Create a local account on the Analysis Services server. Provide this account information to the users.

Answer: B, E

Explanation:

Project Server 2003 uses the data provided by the analysis server to supply users and administrators with a multidimensional database, which they can query using the PivotTable service. The analysis server creates and manages multidimensional data cubes for online analytical processing (OLAP) and provides multidimensional data to PivotTable service, which in turn provides this data to clients. Configuring IIS on the Analysis Services server and then creating a local account on that server will allow users without domain accounts access.

Reference:

Microsoft Training and Certification: Microsoft Official Curriculum: Planning, Deploying, and Managing an Enterprise Project Management solution; Delivery Guide, Course Number 2732A, Module 9: Configuring and Managing Views and Security, Microsoft Press, Redmond, 2003, p. 25

QUESTION 44:

You are the administrator of Microsoft Office Project Server 2003 for Certkiller .com. You develop a resource breakdown structure (RBS) based on the organization's structure. Only project resources are given accounts in Project Server. Management adds a new position called "resource manager." The new resource manager should be able to view all resource manager should be able to view all resource assignments for all resources in the system. The resource manager position should not be available for assignment in any projects in the project server.

You create a Microsoft Office Project Web Access account for a new resource manager, Paul. You add Paul's account to the Resource Manager group in Project Server. When Paul logs on to the project server and selects the Resources tab, the grid returns and following message: "There are no resources to display in this view. You either do not have permissions to see any resources in view or there are no resources in the Project Server database. Contact your server administrator."

You need to ensure that Paul can view all resources and resource assignments in the company without making Paul available for assignment within Project Server.

What should you do?

- A. Add Paul to Enterprise Resource Pool Create an REBS level named "Management" above the current skills areas in the hierarchy. Add Paul to this group. Configure Paul's account as Inactive.
- B. Add Paul's account to the Enterprise Resource Pool. Create an RBS level named "Management" at the same level as each of the skill areas. Add Paul to this group Configure

Paul's account as Active.

C. Select the All current and future resources in the Project Server database option on the Modify Category page for the My Resources security category.

D. Create a new group in Project Server called "Management." Add Paul's account to this group. Add the My Resources category to the Management group.

Answer: C

Explanation:

The My Resources category is associated with resource managers group. Their permission includes Manage and view information about people in their organization and must be assigned by an administrator. On the Modify Category web page, one can complete the configuration by using the Available resources - Select All current and future resources in the Project Server Database and click Save Changes. To give Paul the ability to view all resources and resource assignments without making him available for assignment within Project Server, you have to follow option C.

Reference:

Microsoft Training and Certification: Microsoft Official Curriculum: Planning, Deploying, and Managing an Enterprise Project Management solution; Delivery Guide, Course Number 2732A, Module 9: Configuring and Managing Views and Security, Microsoft Press, Redmond, 2003, pp. 78-80

QUESTION 45:

You are the administrator of Certkiller .com's network.

You install Microsoft SQL Server 2000 On Certkiller

A. You install Microsoft Office Project

Server 2003, Views Processing, and Session Management on Certkiller B. Both servers are in the domain called "Domain1." All users must authenticate to Project Server by using Windows authentication. You have two Windows domain user accounts. The first is a user account without administrative privileges. The second is a domain administrator account. You want to use your user account without administrative privileges to log on to the project server as a Team server Administrator.

You have to configure the server so that you can use different Windows accounts to authenticate to Project Server without logging off from the workstation.

What should you do?

(Each correct answer presents part of the solution. Choose two.)

A. Enable Anonymous Access for the ProjectServer virtual directory on Certkiller B.

B. Enable Basic Authentication for the ProjectServer virtual directory on Certkiller B.

C. Grant read access for Everyone to the IIS Virtual Root directory on Certkiller B.

D. Add the group Domain1\Authenticated Users with the db_datareader role to the Project Server database on Certkiller A.

E. Set up SSL for the ProjectServer virtual directory on Certkiller B.

Answer: B, E

Explanation:

SSL encrypts the data that flows between client browsers and Web servers.

Making use of Basic authentication for the Project Server virtual directory on Certkiller B will allow 'multiple' single user logon.

QUESTION 46:

You are the administrator of the Microsoft Enterprise Project Management solution for Certkiller .com.

During the pilot implementation of the Microsoft Enterprise Project Management solution, Certkiller .com decides not to implement Project Versioning. You deploy the Enterprise Project Management solution on a single server that has Microsoft Windows Project Server 2003 installed on it. The company decides to implement Project Versioning in the Enterprise Project Management solution. You anticipate that your existing configuration may not support the additional demands of Project Versioning.

You need to reconfigure your Enterprise Project Management solution to optimize performance after the implementation of Project Versioning.

What should you do?

(Each correct answer presents part of the solution. Choose two.)

- A. Cluster Project Server for network load balancing.
- B. Cluster Microsoft SQL Server 2000 servers for failover.
- C. Employ additional Microsoft Windows SharePoint Services servers.
- D. Deploy SQL Server on a separate computer.

Answer: A, D

Explanation:

With Project Versioning all Project Professional projects must have a version type associated with them. The administrator for Project Web Access manages the list of valid versions that can be associated with project files published to Project Server. When users publish a project to Project Server, they must select a version type for the project from the list of valid versions.

Thus it follows that a published version of a project must exist before you can save versions of a project to Project Server.

By default, published is the only type of enterprise project version defined in Project Server. If you want to provide other types for users in your organization, you first need to define them.

Network Load Balancing scales the performance of a server-based program, such as a Web server, by distributing its client requests among multiple servers within the cluster. With NLB, each incoming IP packet is received by each host, but accepted only by the intended recipient.

The cluster hosts respond concurrently to multiple client requests, even multiple requests from the same client. A load-balanced cluster will speed up processing and shorten response time.

Given the circumstances as described in the question you would need to cluster Project Server for Network Load Balancing as well as deploy a SQL Server on a separate computer.

Reference:

Microsoft Training and Certification: Microsoft Official Curriculum: Planning, Deploying, and Managing an Enterprise Project Management solution; Delivery Guide, Course Number 2732A, Module 9: Configuring and Managing Views and Security, Microsoft Press, Redmond, 2003, p. 20

QUESTION 47:

You are the administrator of Microsoft Office Project Server 2003 for Certkiller .com. Certkiller .com's accounting department creates a new metric for reporting project information. You create a new Enterprise Project outline code that corresponds to the metric. All projects are coded with the new values and published to the server. The chief financial officer uses Microsoft Office Project Web Access. The chief financial officer needs to be able to view all project information in a pivot table report. You must configure Project Server to create a pivot table view of the new accounting metric.

What should you do?

(Each correct answer presents part of the solution. Choose two.)

- A. Add the new Enterprise Project Outline code to a Portfolio Analyzer view.
- B. Create a Project Center view by adding the new Enterprise Project Outline code.
- C. Build a new OLAP cube.
- D. Add the new Enterprise Project outline code to the list of published fields.

Answer: A, C

Explanation:

A PivotTable is an interactive table that quickly combines and compares large amounts of data. You can rotate rows and columns in a PivotTable to see different summaries of the source data, and you can display the details for areas of interest.

When creating a Portfolio Analyzer View, a PivotTable is used to add information which is drawn from the OLAP cube. Thus you need to build a new OLAP cube and then add the new Enterprise Project Outline code to the new Portfolio Analyzer view.

Reference:

Microsoft Training and Certification: Microsoft Official Curriculum: Planning, Deploying, and Managing an Enterprise Project Management solution; Delivery Guide, Course Number 2732A, Module 9: Configuring and Managing Views and Security, Microsoft Press, Redmond, 2003, p. 41

QUESTION 48:

You are the administrator of Microsoft Office Project Server 2003 for Certkiller .com. You install Project Server with default settings. The resource breakdown structure (RBS) is based on Certkiller .com's departmental hierarchy. The director of the Project Management Office requests a report that lists only the Information Technology Department's resources. The Project Management Office director is in the Portfolio Manager group. She uses Microsoft Office Project Web Access as the client computer to

Project Server.

You must configure Project Server so that the Project Management Office director can view the report she requested.

What should you do?

- A. On the Resource Center page in Project Web Access, create a custom Filter that contains information Technology in the RBS.
- B. Create a Resource Sheet view in the Enterprise Global. Add the RBS column. Filter for Information Technology.
- C. On the Manage Views page, create a new Resource Center view with a filter that contains Information Technology in the RBS.
- D. Open the Enterprise Global. Create a custom Resource report with a filter set for Information Technology resources.

Answer: C

Explanation:

Resource Center Views display enterprise resource field information. These views appear for selection (depending upon the users rights) in the Choose a View drop-down box in the View Enterprise Resources in the Resource Center option in the Resources page. Since the resource breakdown structure is hierarchically based and also that she makes use of Microsoft Office Project Web Access as the client computer to Project Server, you need to create a filter that contains the Information Technology in the RBS.

Reference:

Microsoft Training and Certification: Microsoft Official Curriculum: Planning, Deploying, and Managing an Enterprise Project Management solution; Delivery Guide, Course Number 2732A, Module 9: Configuring and Managing Views and Security, Microsoft Press, Redmond, 2003, p. 48

QUESTION 49:

You are the administrator of the Microsoft Enterprise Project Management solution for Certkiller .com.

You implement Project Server with default settings. You assign users based on their roles in the company to the groups that are built-in to Project Server. Members of the Team Members group have permission to view the Project Center Summary view. You create a custom Enterprise Project code. You create a Project view that includes the new code. Members of the Team Members group report that they cannot see the view.

You must configure Project Server to make the Project view available to members of the Team Members group.

What should you do?

- A. On the Manage Views page of Microsoft Office Project Web Access, modify the new view by selection the Assignment option in the Table: Select the type of information you want displayed in the view.
- B. On the Manage Views page of Project Web Access, modify the new view to display the Detail

Gantt chart for views.

C. On the Manage Views page of Project Web Access, modify the new view to add it to the My Tasks security category.

D. On the Manage Views page of Project Web Access, modify the view to add it to the My Organization security category.

Answer: C

Explanation:

Modify View - Modifies the properties of existing views.

Reference:

Microsoft Training and Certification: Microsoft Official Curriculum: Planning, Deploying, and Managing an Enterprise Project Management solution; Delivery Guide, Course Number 2732A, Module 9: Configuring and Managing Views and Security, Microsoft Press, Redmond, 2003, p. 55

QUESTION 50:

You are the administrator of the Microsoft Enterprise Project Management solution for Certkiller .com.

Certkiller .com network consists of a single Windows Active Directory domain connected to the Internet. You install IIS on Certkiller

A. You install the Enterprise Edition of Microsoft

SQL Server with Analysis Services and all service packs on Certkiller

A. You implement

Microsoft Office Project Server 2003 on Certkiller B. Project managers publish projects to

Project Server. You build an OLAP cube and create Portfolio Analyzer views. The

executive staff asks that an external customer be given access to the Portfolio Analyzer

views. You create a Project Server account. You add the account to a category that has

permission to see Portfolio Analyzer views.

What should you do next?

A. Add the customer's account as a local account on Certkiller A that is a member of the Remote Desktop Users group.

B. Edit the connection string for each Portfolio Analyzer view to connect to the Analysis Services server by using the HTTP protocol with a local user account on the Analysis Services server.

C. Create a Customer group in Project Server and in Active Directory. Add the customer to the Active Directory group. Synchronize the Customer group with the Project Server group.

D. In Analysis Manager for Certkiller A, create a new Role and make Guests a member of that role. Then select The MSP_PORTFOLIO_ANALYZER cube.

Answer: B

Explanation:

Portfolio Analyzer views use Microsoft Office Web components to access OLAP

cube data. Thus after the account has been added to a category that has the proper permissions you also need to edit the connection string for each view to connect to the Analysis Services server using the HTTP protocol with a local user account on that server.

Reference:

Microsoft Training and Certification: Microsoft Official Curriculum: Planning, Deploying, and Managing an Enterprise Project Management solution; Delivery Guide, Course Number 2732A, Module 9: Configuring and Managing Views and Security, Microsoft Press, Redmond, 2003, p. 3

QUESTION 51:

You are the administrator of Microsoft Office Project Server 2003 for Certkiller .com. You install Microsoft SQL Server 2000, Analysis Services, Project Server, and the sample database. You install the OLAP COM+ components. You successfully build the OLAP cube in Analysis Services. You install Microsoft Office Web Components on all client computers. When users try to access Portfolio Analyzer views, they receive the following message: "Unable to access the Microsoft Office Project Portfolio Analyzer OLAP cube." You need to ensure that users can view Portfolio Analyzer views from the sample database. What should you do?

- A. Migrate the Analysis Service repository to a SQL Server database.
- B. Add user accounts to the OLAP Administrator group.
- C. Update resources availability information. Update the OLAP cube.
- D. Enter the correct name of the Analysis Services server and the OLAP cube name.

Answer: A

Explanation:

Before configuring Project Web Access Analysis Service settings, one should migrate the Analysis Services repository to a SQL Server database. You must publish a project to the Project Server database before building the OLAP cube in order to see data in the cube.

Reference:

Microsoft Corporation, Microsoft Office Project Server 2003 Installation Guide, Microsoft Press, Redmond, 2003, Chapter 8, p. 130

QUESTION 52:

You are the administrator of Microsoft Office Project Server 2003 for Certkiller .com. You install Project Server with default security settings. All resource manager accounts are member of the Resource Manager group. Members of the Resource Manager group determine which resources work on certain projects. Members of the Resource Manager group use Microsoft Office Project Web Access. You must configure Project Server so members of the Resource Manager group can determine which resources work on certain projects. What should you do?

- A. Change Assign Resource permission to Allow in the Resource Manager group.
- B. Modify the My Resources security category by setting the Build Team on Project permission to Allow.
- C. Change the Resource Manager security template to allow assigning resources for Enterprise Portfolio Management.
- D. Modify the security category My Projects permission to allow the Resource Manager group to assign resources.

Answer: B

Explanation

: Build Team on Project is a category permission that determines whether a user can add resources to a project that is already saved to the Project Server database. Grant this permission to project managers who want to use the Build Team feature in Project Professional to staff their projects before saving (and publishing) them to the Project Server database. Or, grant this permission to resource managers who want to use the Build Team feature in the Project Center of Project Web Access to add resources to a project that is already saved to the Project Server database. By setting the My Resources category to Allow Build Team on Project permission will enable Resource Manager Group members to determine which resources work on certain projects.

Reference:

Microsoft Corporation, Microsoft Office Project Server 2003 Administrator's Guide, Microsoft Press, Redmond, 2003, pp. 277-278, 281

QUESTION 53:

You are the network administrator for Certkiller .com.

You set up Microsoft Office Project Server 2003 to rebuild the OLAP cube each Saturday night. All service accounts are Domain accounts. The cube is rebuilt successfully every week for three months. On a Monday morning, executives report that the data in the Portfolio Analyzer views is not current. You check Project Server. You see that the last rebuilding of the cube is nine days ago.

You must ensure that cubes are processed successfully and executives can obtain current data with the least ongoing administrative effort.

What should you do?

- A. Run ProxyCfg.exe on the Project Server server.
- B. Reactivate the OLAPAdmin account with the same password as previously set.
- C. Add the OLAPAdmin account to the local computer's Administrators group.
- D. Create a local account named OLAPAdmin in the OLAP Administrators group. Run PSCOMPlus.exe.

Answer:

Explanation:

Pending

QUESTION 54:

You are the administrator of Microsoft Office Project Server 2003 for Certkiller .com. Certkiller .com uses Project Server. You install Project Server, Views Processing, and Session Management on Certkiller 1. Project managers can save and publish projects successfully. Normally team members receive new assignments every day. A few days later, team members report that they cannot access their new assignments in the timesheet. You have to configure the server so that team members can access all their assignments in the timesheet. What should you do?

- A. Open the Enterprise Resource Pool. Enter a resource breakdown structure (RBS) value for all team members, and save to Project Server.
- B. Change all users in the Team Members group to Windows Authentication.
- C. Stop and restart the Views Notification service.
- D. Increase the settings for Define current task from 10 days to 50 days.

Answer: D

Explanation:

Resources must have assignments that overlap with the current timesheet period, have an assignment that is pending approval, or have an ongoing assignment in order for their assignments to be available in the Timesheet view. If a resource's timesheet is not available in the Timesheet view, they cannot report hours worked or submit a timesheet, and this is not an unsubmitted timesheet. Unsubmitted timesheets only exist if a resource fails to enter actual work and submit a timesheet that is available in the Timesheet View.

Under Time period settings, set the day of the week on which a week begins, the time period that the timesheet covers, and additional reporting information.

In addition, if you have select Hours of work done per day or day per week, then you can also specify whether the time periods are managed or non-managed.

Thus increasing the settings for Define current task from 10 days to 15 days will grant access to all their assignments in the timesheet to the team members.

Reference:

Microsoft Training and Certification: Microsoft Official Curriculum: Planning, Deploying, and Managing an Enterprise Project Management solution; Delivery Guide, Course Number 2732A, Module 10: Administering an EPM Solution, Microsoft Press, Redmond, 2003, p. 37

Microsoft Corporation, Microsoft Office Project Server 2003 Administrator's Guide, Microsoft Press, Redmond, 2003, p. 186

QUESTION 55:

You are the administrator of Microsoft Office Project Server 2003 for Certkiller .com. Project Server runs in a distrusted environment. The Views Processing server, ViewsA, fails. You reinstall the Views Processing components on a new server, ViewsB. Project managers save their projects to the Project Server server, Certkiller B. During routine

maintenance, you find thirty .xml files in the ViewDrop folder on Certkiller B. You check the event log on the Certkiller B. You see the following error message: "Failed to forward 'C:\Program Files\Microsoft Office Project Server 2003\Bin\ViewDrip\3982208B-238E-4035-89B0-95035FE2AEDB.xml' to \\ViewsB\ViewDrop\3982208B-238E-4035-89B0-95035FE3AEDB.1x"."

You need to ensure that team members can view projects by using Project Web Access. What should you do?

- A. Change the value of the Forward UNC registry key to A. \\ViewB\ViewsFileDrop".
- B. Give the Views Processing account the Read and Write permissions on the ViewDrop share on ViewsB.
- C. Delete the oldest .xml file in the ViewDrop folder on the Project Server application server.
- D. Give the Views Processing account the Log on Locally right on ViewsB.

Answer: B

Explanation:

Whenever one needs to write to the Views Processing you need to log on to the server using with an administrative account for Microsoft Project Web Access. However, in the question it is stated that the Project Server runs in a distrusted environment. Therefore you cannot allow all team members administrative rights and they just need to have the Read and Write permissions to be able to view projects by using the Project Web Access.

Reference:

Microsoft Training and Certification: Microsoft Official Curriculum: Planning, Deploying, and Managing an Enterprise Project Management solution; Delivery Guide, Course Number 2732A, Module 4: Implementing Project Server, Microsoft Press, Redmond, 2003, p. 7

QUESTION 56:

You are the administrator for Microsoft Office Project Server 2003 for Certkiller .com. Certkiller .com install Project Server and Microsoft Office Project Web Access. Actual values for vacation time are not displayed when project managers review work in Project Web Access. Project managers need to review actual time values for the vacation time of team members.

You must ensure that project managers can review actual values for the vacation time of team members in Project Web Access.

What should you do?

- A. Add a Vacation task in the Enterprise Global Template.
- B. Add a non-project resource named "Vacation" in the Enterprise Global Template.
- C. Create a Vacation task. Save the project as a Template on the project server.
- D. Create a Vacation task. Save the project as an Administrative Project on the project server.

Answer: D

Explanation:

If files are to be a template then it is best that the file be saved as Template or even imported as a Template. In this case the Vacation work is a working project, then it is best to be saved as Project.

Calendars can be made available to an entire organization to assist in the matching of projects and resources. In order for a calendar to be available throughout the organization, it must be created when the Enterprise Global Template is open. However, this is not what is required by the question.

Reference:

Microsoft Training and Certification: Microsoft Official Curriculum: Planning, Deploying, and Managing an Enterprise Project Management solution; Delivery Guide, Course Number 2732A, Module 8: Configuring and Managing Resource and Project Data, Microsoft Press, Redmond, 2003, pp. 3, 43

QUESTION 57:

You are the administrator of Microsoft Office Project Server 2003 for Certkiller .com. Certkiller .com requires weekly timesheet reporting from project team members. Timesheet periods are Saturday to Saturday. Written company policy prohibits team members from altering timesheets for periods that are in the past.

You must configure Project Server to allow team members to enter their time for the current week only.

What should you do?

- A. On the Customize Project Web Access page, select weekly Non-Managed Periods. Give Team Members Adjust Actuals permission.
- B. On Time Period Settings of the Customize Project Web Access page, select Saturday as the first day of the week. Select the Resources should report their total hours worked for the week check box.
- C. In Microsoft Office Project Web Access, create weekly managed periods. Mark the status "Open" for each current week.
- D. Change the value of current tasks on the timesheet to be only those tasks that start within seven days of the current date. Give team members permission to adjust actual hours of work.

Answer: C

Explanation:

Resources must have assignments that overlap with the current timesheet period, have an assignment that is pending approval, or have an ongoing assignment in order for their assignments to be available in the Timesheet view. If a resource's timesheet is not available in the Timesheet view, they cannot report hours worked or submit a timesheet, and this is not an unsubmitted timesheet. Unsubmitted timesheets only exist if a resource fails to enter actual work and submit a timesheet that is available in the Timesheet View.

Thus marking the status "Open" for each current week as described in option C will grant to allow team members to enter their time for the current week only.

Reference:

Microsoft Training and Certification: Microsoft Official Curriculum: Planning, Deploying, and Managing an Enterprise Project Management solution; Delivery Guide, Course Number 2732A, Module 10: Administering an EPM Solution, Microsoft Press, Redmond, 2003, p. 37
Microsoft Corporation, Microsoft Office Project Server 2003 Administrator's Guide, Microsoft Press, Redmond, 2003, p. 186

QUESTION 58:

You are the administrator of Microsoft Office Project Server 2003 for Certkiller .com. Certkiller .com installs Project Server, Microsoft Office Project Professional 2003, and Microsoft Office Project Web Access. Team members submit actual hours by using timesheets in Project Web Access. Project managers want to be notified if they edit actual values for a closed period when they use Project Professional to edit actual work hours of team members.

You need to make sure that project managers are notified if they are editing actual values for a closed period.

What should you do?

- A. Select the Non-Managed Periods options for Time Periods tracking setting.
- B. Select the Managed Periods options for Time Periods tracking setting.
- C. Select the Percent of Work Remaining tracking setting.
- D. Select the Actual work done per day tracking setting.

Answer: B

Explanation:

To specify the default tracking settings:

1. On the Admin page in Project Web Access, in the side pane under Actions, click Customize Project Web Access.
2. In the side pane, under Customization options, click Tracking settings.
3. On the Tracking settings page, under Specify the default method for reporting progress on tasks, choose one of the following default tracking methods:

To track progress based on a percentage of total work is completed, click percent of work complete.

To track projects based on how much work is completed compared to how much work remains, click Actual work done and Work Remaining

To have resources periodically enter hours worked (daily or weekly), click Hours of work done per day or per week. This option is required if you want to use the timesheet lockdown feature.

4. Click Save Changes.

If you plan to use managed time periods, you must choose Hours of work done per day or per week as your enterprise project tracking setting.

Reference:

Microsoft Corporation, Microsoft Office Project Server 2003 Administrator's Guide, Microsoft Press, Redmond, 2003, pp. 187-188

QUESTION 59:

You are the administrator of Microsoft Office Project Server 2003 for Certkiller .com. Project Server is installed with default settings. Each week, Certkiller .com uses Microsoft Office Project Web Access to report on timesheets actual work hours on project. The accounts Receivable Department uses the timesheet report to reconcile billing. No work can be reported after the week closes. Written company policy states that the Accounts Receivable manager controls the periods during which resources can report actual work hours in Project Web Access. You assign the manager of Accounts Receivable to Executive group.

You must configure Project Server to allow the Accounts Receivable manager the ability to control the periods resources can report actual work hours.

What should you do?

- A. Add the Accounts Receivable manager to the My Organization security Category.
- B. Modify the Accounts Receivable manager's Global Permissions to allow Customize Project Web Access.
- C. Allow the Executive group to set the options Adjust Actuals and Approve Timesheets for resources.
- D. In the Global Permissions section for the Accounts Receivable manager, select the Allow option for Manage Rules.

Answer: B

Explanation:

The Customize Project Web Access section allows you to specify timesheet tracking settings, create managed timesheet periods, customize Gantt Chart, Grouping format, and Home page displays, and configure default e-mail notification and reminder service messages.

Reference:

Microsoft Corporation, Microsoft Office Project Server 2003 Administrator's Guide, Microsoft Press, Redmond, 2003, p. 11

QUESTION 60:

You are the administrator of Microsoft Office Project Server 2003 for Certkiller .com. Certkiller .com installs Project Server. Not all team members who use Project Server remembers to update the task information on their timesheets when task status changes. The Project Management Office requests that team members be notified when a task needs updating.

You must configure Project Server to allow team members to be notified when their tasks need updating.

What should you do?

- A. On the checked-out Enterprise Global, select the Collaborative Options dialog box. Select the update resources' assignments when Any Task Information changes option.

- B. On the Customize Project Web Access page, enter the name of an available SMTP server in the Notifications and Reminders section.
- C. On the Customize Projects Web Access page, in the Notification and Reminders section, set the e-mail reminder service to run daily at 6:00AM.
- D. Add the Summary Assignment view to the My Tasks category. Make the Allow option unavailable for the permission to Hide Tasks in Timesheet for Team Member group.

Answer: B

Explanation:

The Customize Project Web Access section allows you to specify timesheet tracking settings, create managed timesheet periods, customize Gantt Chart, Grouping format, and Home page displays, and configure default e-mail notification and reminder service messages.

Reference:

Microsoft Corporation, Microsoft Office Project Server 2003 Administrator's Guide, Microsoft Press, Redmond, 2003, p. 11

QUESTION 61:

You are the administrator of Microsoft Office Project Server 2003 for Certkiller .com. You install Project Server and Microsoft Windows SharePoint Service with default settings. A project manager creates three test projects in Microsoft Office Project Professional and publishes each to Project Server. The project manager cannot create custom lists on his projects Windows SharePoint Services sites. You modify the project manager's Global Permissions to allow the Manage Windows SharePoint Services permission. The project manager still cannot create custom lists for his test projects. You need to configure Project Server to allow the project manager to create custom lists for the test projects sites. What should you do?

- A. Run the PSComPlus.exe utility with the project manager's Windows account.
- B. On the SharePoint Central Administration menu, select the Virtual Server Management option. Click Manage Content Database. Select the Add a content database option. Point the virtual server to the Project Server database.
- C. On the Manage Windows SharePoint Services page, select the Synchronize administrator accounts option.
- D. On the Manage Windows SharePoint Services page, set the SharePoint Central Administration URL to use port 80.

Answer: C

Explanation:

A user who is assigned the Manage Windows SharePoint Services permission does not automatically have access to the project sites created on the server running Windows SharePoint Services. In addition to granting users the Manage Windows SharePoint Services

permission you must also synchronize Project Server 2003 with Windows SharePoint Services. If a user has only Windows authentication and their account is modified to grant them Manage Windows SharePoint Services permission in Project Server, the user is not automatically added to all project sites created on the specified server running WSS.

Therefore, the user with Manage Windows SharePoint Services permission in Project Server does not have access to the project sites created on the server running Windows SharePoint Services. You can fix this situation in the Manage Windows SharePoint Services area of Project Web Access by clicking Synchronize Administrators.

When you click this button, each Project Server account user who has Manage Windows SharePoint Services permission is added to the Web Administrators (Project Server) group on all project sites created on the server running WSS.

Reference:

Microsoft Corporation, Microsoft Office Project Server 2003 Administrators Guide, Microsoft Press, Redmond, 2003, p. 141

QUESTION 62:

You are the administrator of the Microsoft Enterprise Project Management solution for Certkiller .com.

You install Microsoft Office Project Server 2003. You install Microsoft SQL Server 2000 and Analysis Services on Certkiller

A. You install Microsoft Windows SharePoint Services on Certkiller B. You install Project Server, Views Processing and Session Management on Certkiller C. Certkiller .com uses Microsoft Windows SharePoint Portal Server on Certkiller D. Users want to search the content of existing document libraries on their corporate internet within their project Windows SharePoint Services site.

You have to configure the servers so that the indexed content of the corporate network can be searched by keywords.

What should you do?

A. Run SQL Server Enterprise Manager on Certkiller

A. Select the Windows SharePoint Services content database for Project Server. Run the Full-text indexing wizard.

B. Run SharePoint Central Administration on Certkiller C. Enable the Full-text search and index component.

C. Connect Project Server to the SharePoint Portal Services on Certkiller D.

D. Enable and start the Indexing Service on Certkiller B.

Answer: C

Explanation:

Windows SharePoint Services (WSS) is a component of Project Server and is not a stand-alone program such as IIS 6.0 or SQL Server. Using the build slide, show how user requests are processed using the Internet or intranet to gain access to the document libraries that are available through Windows SharePoint Services. Windows SharePoint Services provide document library, risk management and issue tracking features. These three features facilitate

collaboration in planning, executing, and closing a project. Windows SharePoint Services is required for project collaboration. The security features of Windows SharePoint Services require the NTFS file system. You will need to connect Project Server to the SharePoint Portal Services on Certkiller D so that the servers' indexed content of the corporate network can be searched by keywords.

Reference:

Microsoft Training and Certification: Microsoft Official Curriculum: Planning, Deploying, and Managing an Enterprise Project Management solution; Delivery Guide, Course Number 2732A, Module 3: Installing and Configuring Project System Servers, Microsoft Press, Redmond, 2003, p. 21

QUESTION 63:

You are the administrator of Microsoft Office Project Server for Certkiller .com.

You install Project Server on Certkiller

A. You install Microsoft Office Project Professional

from an Administrative installation point. All client computers connect to Certkiller

A. You

install a new project server, Certkiller B, that has a different internet address than that of Certkiller A.

By using the least administrative effort, you must update Project Professional to connect to Certkiller B.

What should you do?

A. On the Tools menu in Project Professional, click Option. Select the Collaborate option. Enter the Project Server address.

B. Deploy registry key by using the Custom Maintenance wizard.

C. Deploy Project Professional by using the Office Setup command line.

D. Edit the .msi file and re-install Project Professional.

Answer: B

Explanation:

For users to access projects, resources, and tasks in Project Server 2003, Project Professional 2003 must be installed and then properly configured to connect to the Project Server 2003 server. You can define and deploy the registry keys necessary to include the Project Server connection information by using the Custom Maintenance Wizard tool included in the Microsoft Office 2003 Resource Kit. This option presents the least administrative effort to update Project Professional to connect to Certkiller B which is a Project Server.

Reference:

Microsoft Training and Certification: Microsoft Official Curriculum: Planning, Deploying, and Managing an Enterprise Project Management solution; Delivery Guide, Course Number 2732A, Module 6: Deploying Project 2003 Clients, p. 29

QUESTION 64:

You are the administrator of the Microsoft Enterprise Project Management solution for Certkiller .com.

All team members have Domain accounts in Active Directory. You install Microsoft Office Project Server 2003 and Microsoft Windows SharePoint Services to an SSL-enabled Web server. In Project Server, you set authentication for Project Server users to Windows only. Occasionally, team members need to check their task information in Microsoft Project Web Access from other team members' computers.

You must configure the Enterprise Project Management solution to allow the Log on using a different Microsoft Windows user account feature in Microsoft Office Project Web Access.

What should you do?

- A. Set up an Active Directory security group that includes all Team Members user accounts. In Project Web Access, synchronize the Active Directory group to the Team Member group and to the Enterprise Resource Pool.
- B. In IIS, select the Project Server virtual directory properties dialog box. Clear the Index this resource option.
- C. Enable Basic authentication for the Project Server 2003 virtual directory and for the Remote Data Services ISAPI Library.
- D. Install Internet Authentication Server (IAS) on the IIS server that is running Project Server 2003.

Answer: C

Explanation:

If you want to use SharePoint Portal Server on the intranet with Basic authentication or Anonymous, you must create a new virtual Web site and modify the security settings.

QUESTION 65:

You are the administrator of Microsoft Office Project Server 2003 for Certkiller .com.

You install Microsoft Windows Server 2000 and Microsoft Windows SharePoint Services on a single server. You create an additional Web site in IIS for Microsoft Office Project Server 2003. When the Windows SharePoint Services configuration wizard displays the list of virtual servers for creating project sites, the list is empty.

You must be able to run the Windows SharePoint Services configuration wizard successfully.

What should you do?

- A. Create An SMTP Virtual Server in IIS.
- B. Create a Virtual Directory within the default Web site in IIS.
- C. Create a new Web Site in IIS.
- D. Extend the Web site and create a content database in Windows SharePoint Services Administration.

Answer: D

Explanation:

If you want to run Windows Sharepoint Services configuration wizard, then you must run the CD on the computer where the Windows SharePoint Services is located. In this case where an additional Website was created in IIS, you need to extend the website and create a content database in Windows Sharepoint Services Administration.

Reference:

Microsoft Training and Certification: Microsoft Official Curriculum: Planning, Deploying, and Managing an Enterprise Project Management solution; Delivery Guide, Course Number 2732A, Module 3: Installing and Configuring Project System Servers, Microsoft Press, Redmond, 2003, p. 28

QUESTION 66:

You are the administrator of the Microsoft Enterprise Project Management solution from Certkiller .com.

Certkiller .com uses Microsoft Project Server 2002 and Microsoft SharePoint Team Services. You decide to upgrade to Microsoft Office Project Server 2003 and Microsoft Windows SharePoint Services. The Project Server 2002 database is on the Microsoft SQL Server 2000 server. Project Server 2002 is on your IIS server. You back up the Project Server 2002 database and transaction log completely.

You must migrate the Project Server 2002 data to Project Server 2003 while keeping the database on the original server.

What should you do?

- A. Copy the \Database folder from the Project Server 2003 CD-ROM to the SQL Server. Run the UPG10DB.CMD script from the SQL server.
- B. Install Project Server 2003 on the IIS server. On the Set the Database Server information dialog box, select the Connect to an existing database option. Enter the SQL server and database name of the Project Server 2002 database.
- C. From the SQL Server, run the PSMigrat.exe tool located on the Project Server 2003 CD-ROM
- D. From the SQL Server, run the Upgwtbls.sql script located on the Project Server 2002 database.

Answer: A

Explanation:

You can migrate a Project Server 2002 database to Project Server 2003 by executing an SQL script from the command line. The file for this script is named UPG10DB.CMD and is located on the Project Server 2003 compact disc. This migration script should be run on the computer that contains the database you are migrating. This SQL script will upgrade your Project Server database but will not upgrade SharePoint Team Services data from Project Server 2002. The upgrade of SharePoint Team Services data is a separate process.

Reference:

Microsoft Training and Certification: Microsoft Official Curriculum: Planning, Deploying, and

Managing an Enterprise Project Management solution; Delivery Guide, Course Number 2732A, Module 11: Migrating Project Data, Microsoft Press, Redmond, 2003, p. 3

QUESTION 67:

You are the administrator of Microsoft Office Project Server 2003 for Certkiller .com. Certkiller .com implements Project Server with default security settings. There are fifteen project managers and one director in Certkiller .com's Project Management Office (PMO). Each PMO staff member belongs to the Portfolio Manager group in Project Server. Only the administrator and the director should have permission to configure the Enterprise Global.

You must configure Project Server to allow only the administrator and director of the PMO to set up the Enterprise Global.
What should you do?

- A. For the director of the PMO, select the Allow check box on the Global Permission Save Enterprise Global. Clear the Allow check box for the same permission in the Portfolio Manager group.
- B. For the director of the PMO, select the Allow check box on the Global Permission Save Enterprise Global. Clear the Allow check box for the same permission in Server Configuration page in Project Web Access.
- C. For the director of the PMO, select the Allow check box on the Global Permission Save Enterprise Global. Select the Deny Check for the same permission in the Portfolio Manager group.
- D. For the director of the PMO, select the Allow check box on the Global Permission Save Enterprise Global. Select the Deny check box for the same permission for the My Organization category.

Answer: A

Explanation:

To be able to setup Enterprise Global you must have the Save Enterprise Global permission. Thus if you want to allow only the administrator and the director of PMO to be able to setup the Enterprise Global the Allow Check box should be selected to grant the appropriate permission to the director of the PMO and the Portfolio Manager's group should not be allowed this permission. Hence the clearing of the Allow check box for the same permission.

Reference:

Microsoft Training and Certification: Microsoft Official Curriculum: Planning, Deploying, and Managing an Enterprise Project Management solution; Delivery Guide, Course Number 2732A, Module 8: Configuring and Managing Resource and Project Data, Microsoft Press, Redmond, 2003, p. 15

QUESTION 68:

You are the administrator of Certkiller .com's network.
Certkiller .com's Active Directory domain is named "ADATUM." You install Microsoft

SQL Server 2000 and Analysis Services on Certkiller

A. You install Microsoft Office Project

Server 2003 on Certkiller B. You want to be able to synchronize all of your project managers' Active Directory accounts with their Project Server accounts.

You have to configure your solution so that the project managers' Active Directory accounts can be synchronized with Project Server.

What should you do?

A. Create a local group named AD_Sync on Certkiller B. Add all project managers' Active Directory accounts to this group. Enter the Ad_Sync group in the Enterprise Features setup of Project Server.

B. Create a new group called "ProjectServer" in Active Directory. Add all project managers to this group. Enter the ProjectServer group in the Enterprise Features setup of Project Server.

C. Create a new Enterprise Resource Attribute called Ad-Sync. Add all project manager accounts to the Enterprise Resource Pool. Set the AD_Sync attribute to Yes for the project managers' accounts.

D. Add all project manager accounts to the Enterprise Resource Pool. Set their Windows Account information to ADATUM\%Username%.

Answer: B

Explanation:

Enterprise features are available only when users log on to Project Server from Project Professional or Project Web Access. Enterprise features allow administrators to create a common experience for users of Project Server data, help improve the security of Project Server data, and standardize your organization's project management approach with a common set of rules, reports, and users.

Since the project managers' Active Directory accounts have to be synchronized with Project Server, you need to create a new group in Active Directory for the project managers and enter this group into the Enterprise Features Setup of Project Server.

Reference:

Microsoft Training and Certification: Microsoft Official Curriculum: Planning, Deploying, and Managing an Enterprise Project Management solution; Delivery Guide, Course Number 2732A, Module 9: Configuring and Managing Views and Security, Microsoft Press, Redmond, 2003, pp. 11-12

QUESTION 69:

You are the administrator of Microsoft Office Project Server 2003 for Certkiller .com.

You install Project Server with the default security settings. Functional managers are placed in the Resource Manager group. Functional managers need access to resource information for the departments that report to them. Functional managers should not have access to resource information for other departments. Functional managers access all Project Server information by using Microsoft Office Project Web Access.

You must ensure that the functional managers can view resource information for their departments only.

What should you do?

- A. Set up an Enterprise Resource Outline Code for the resource breakdown structure (RBS) that corresponds to the departmental hierarchy.
- B. Define a multi-level code mask for a custom Enterprise Resource Outline Code.
- C. Create a custom Enterprise Resource Code that includes a list of values that correspond to departmental codes.
- D. Add Resource groups that match the departmental codes to the Enterprise Resource Pool.

Answer: A

Explanation:

Enterprise outline codes are essential for defining the resources that are available for use within an organization. Enterprise outline codes are represented in a hierarchical manner to best match a hierarchical organization of resources. Enterprise outline codes are a special kind of enterprise custom field that uses a hierarchical list of possible values, called a lookup table. The lookup table enables detailed rollup reporting to be done based on these values. The Resource Breakdown Structure (RBS) field is a specifically defined enterprise resource outline code that is used to place a resource within the organizational structure of the company. Its lookup table is generally based on the organizational chart of the company. The RBS also has a specific purpose within the security model of Project Server 2003, in that it defines the relationship between manager and employee. The security categories in Project Server have permissions that control which projects or resources a specific set of users can view. Some of these settings use the RBS values of resources to define whether a user can see information about another resource. For this reason the design of this outline code's lookup table and the values given to individual resources are very important in the operation of the system.

Reference:

Microsoft Training and Certification: Microsoft Official Curriculum: Planning, Deploying, and Managing an Enterprise Project Management solution; Delivery Guide, Course Number 2732A, Module 8: Configuring and Managing Resource and Project Data, Microsoft Press, Redmond, 2003, p. 19

QUESTION 70:

You are the administrator of Microsoft Office Project Server 2003 for Certkiller .com. You install Project Server. Managers are in a security category with permission to view only the resources they manage. The managers report they are not seeing resource information for any resource.

You must ensure that managers can see information only for their current and future resources.

What should you do?

- A. Select the same resource breakdown structure (RBS) value for the resources as for their manager.
- B. Create a view grouped by RBS. Add the view to the manager's security category.
- C. Add the RBS value that corresponds to each resource's position in the company's

organizational hierarchy.

D. Create departmental security categories with access only to resource view filtered by RBS.

Answer: C

Explanation:

RBS codes are a reflection of the organization's organizational chart. It is a hierarchical representation of the organization's resources. Managers can use RBS codes to allow them to view resource utilization of their subordinates in the organization.

During the conceptual design phase of a project, the team must identify the primary strategy used to define the detailed RBS codes. An organization chart is a typical guide for developing the RBS codes. This technique generates a tree structure, upon which the enterprise global codes can be based. This tree structure closely matches the outline of resource technology requirements.

Thus adding the RBS value that corresponds to each resource's position in the company organizational hierarchy should ensure that managers can see the information only for their current and future resources.

Reference:

Microsoft Training and Certification: Microsoft Official Curriculum: Planning, Deploying, and Managing an Enterprise Project Management solution; Delivery Guide, Course Number 2732A, Module 8: Configuring and Managing Resource and Project Data, Microsoft Press, Redmond, 2003, p. 23

QUESTION 71:

You are the administrator of the Microsoft Enterprise Project Management solution for Certkiller .com.

You install Microsoft Office Project Server with default settings. You create the Enterprise Outline code for the resource breakdown structure (RBS) that matches Certkiller .com's organizational structure. You create the Enterprise

Resource Pool. You add departmental managers to the Portfolio Managers group. You create a security category called "My Department" and add the Portfolio Managers group to it. You select the option that allows user in this category to view all projects assigned to the resources that they manage. You add all available views to the My Department category. Departmental managers need to be able to view all tasks for each project on which their resources are working.

You must ensure that departmental managers can view all tasks for each project on which their resources are working.

What should you do?

A. On the Security page, modify the My Department category by adding all available Project Center views.

B. Set the Global Permissions in the My Department category by using the Portfolio Managers Security Template.

C. In the My Department category, select the Allow users in this category to view information for all resources that they manage check box.

D. Assign an RBS value to resources that match the organizational structure.

Answer: D

Explanation:

Portfolio Managers, Administrators, and Executives are assigned to the My Organizations category (a pre-defined category). This assignment along with their RBS value gives them permissions to see data about the projects and resources within their organization. Thus assigning an RBS value to resources that matches the organizational structure, will ensure that departmental managers can view all tasks for each project on which their resources are working.

Reference:

Microsoft Training and Certification: Microsoft Official Curriculum: Planning, Deploying, and Managing an Enterprise Project Management solution; Delivery Guide, Course Number 2732A, Module 9: Configuring and Managing Views and Security, Microsoft Press, Redmond, 2003, p. 71

QUESTION 72:

You are the administrator of Microsoft Office Project Server 2003 for Certkiller .com. On your project server, you deny access for the My Tasks category to see resource assignments in Assignment views. You import resources from a non-Enterprise project into Project Server by using Import Resources to Enterprise. One of the imported resources, Helen, is also a resource manager. You add this resource manager to the Resource Manager group in Project Server.

When Helen attempts to view assignment for the resources she manages, she receives the following message: "You do not have permission to view assignments of any resources."

You verify that the My Resources category has the rights on the server to allow resources in this category to view information for all resources that they manage.

You need to ensure that Helen can view resources and assignment information on the project server for all resources she manages.

What should you do?

- A. Remove Helen from the Team Member group on the project server.
- B. Add Helen to the Team Leads group on the project server.
- C. Select the My Resources category Allow resources in this category to view all projects assigned to resources they manage rights.
- D. Select the My Resources category Allow resources in this category to view all information for all resources that they manage directly rights.

Answer: A

Explanation:

Views define the project information that all Project Web Access users can see and the way project information is displayed, such as in a table or in a Gantt Chart. Permissions determine the project data to which a user has access. For example, a team member can only

report actual work against a task in a project in which they are assigned task; additionally, this project must also be a part of a security category to which the team member belongs. Any views associated with that project that the team member needs to be able to view must also belong to the security category to which the team member belongs. A team member's timesheet only displays tasks to which the team member is assigned.

Thus you need to remove Helen from the Team member group on the project server to allow her the ability to view resources and assignment information on the project server for all the resources she manages.

Reference:

Microsoft Corporation, Microsoft Office Project Server 2003 Team Members Guide, Microsoft Press, Redmond, 2003, p. 18

QUESTION 73:

You are the administrator of Microsoft Office Project Server 2003 for Certkiller .com.

You install Microsoft SQL Server 2000, analysis Services, and Project Server. You install Microsoft Office Project Professional project managers who use Portfolio Analyzer views.

Project manager use a Portfolio analyzer view named "Resources Required Next Month" to analyze what is planned to happen next month. Project manager who display this view in Project Professional Or Microsoft Office Project Web Access cannot select OLAP cube fields.

You need to modify the view to ensure that project managers can select OLAP cube fields.

What should you do?

- A. Add the view to the MY Organization category.
- B. Set the Show Field List default setting to True.
- C. Set the default Pivot Table with chart setting to True.
- D. Set OLAP resource availability.

Answer: B

Explanation:

The Field List dialog boxes contain two types of data: totals and dimensions.

To add information to the PivotTable and chart views, simply drag a field from the Field List dialog box to the appropriate section of the PivotTable or chart.

Setting the Show Field List default setting to True will provide the project managers the ability to select OLAP cube fields.

Reference:

Microsoft Training and Certification: Microsoft Official Curriculum: Planning, Deploying, and Managing an Enterprise Project Management solution; Delivery Guide, Course Number 2732A, Module 8: Configuring and Managing Resource and Project Data, Microsoft Press, Redmond, 2003, p. 12

QUESTION 74:

You are the administrator of Microsoft Office Project Server 2003 for Certkiller .com.

You implement Project Server. The list of fields to be published is set to default values in the Enterprise Global. The Accounting Department gives you a list of job cost codes for new projects.

You must configure the server so that every new project saved to Project Server has a value for one of these job cost codes.

What should you do?

- A. Create blank Enterprise Templates so that each job cost code corresponds to its project type in the properties Category field.
- B. Add a required Enterprise Project Code that has a value list that corresponds to the job cost codes.
- C. Create an Enterprise Project Code that has a value list that corresponds to the job cost code is selected as a Published Field.
- D. Add The list of job code values to a custom Project Code. Add the code to the Enterprise Gantt View of the Enterprise Global.

Answer: B

Explanation:

The Value list Once populated, provides the user with a selection of preset values.

Thus configuring the job cost codes as the value list of the required Enterprise Project Code will have every new project saved to the Project Server have a value for one of these job cost codes.

Reference:

Microsoft Training and Certification: Microsoft Official Curriculum: Planning, Deploying, and Managing an Enterprise Project Management solution; Delivery Guide, Course Number 2732A, Module 8: Configuring and Managing Resource and Project Data, Microsoft Press, Redmond, 2003, p. 10

QUESTION 75:

You are the administrator of Microsoft Office Project Server 2003 for Certkiller .com. Project Server runs in a distributed environment. The Views Processing server, ViewsA, fails. You reinstall the Views Processing components on a new server, ViewsB. Project managers save their projects to the Project Server server, Certkiller 2. During routine maintenance, you find thirty .xml files in the ViewDrop folder on Certkiller 2. You check the event log on the Certkiller 2. You see the following error message: "Failed to forward "C:\Program Files\Microsoft Office Project Server 2003\Bin\ViewDrop\3982208B-238E-4035-89B0-95035FE2AEDB.xml" to "\\ViewsB\ViewDrop\3982208B-238E-4035-89B0-95035FE2AEDB.1"."

You need to ensure that team members can view projects by using Project Web Access.

What should you do?

- A. Change the value of the Forward UNC registry key to "\\ViewsB\ViewsFileDrop".
- B. Give the Views Processing account the Read and Write permissions on the ViewDrop share on ViewsB.
- C. Delete the oldest .xml file in the ViewDrop folder on the Project Server application server.

D. Give the Views Processing account the Log On Locally right on ViewsB.

Answer: B

Explanation:

Full Control permissions for accessing the ViewDrop folder must be granted to the local Administrators group, the System account, the Authenticated Users group and the Internet Guest account on the machine where the Views Processing Service is located. Additionally, the Everyone group must be granted permissions to the ViewDrop folder to read, write, modify, read and execute, and list folder contents. If these permissions are not granted, then publishing actions will fail because the Project Server application will not be able to save files into and delete files from this folder. You thus need to grant the Views Processing account the Read and Write permissions on the ViewDrop share on ViewsB so that team members can view projects using Project Web Access.

Reference:

Microsoft Training and Certification: Microsoft Official Curriculum: Planning, Deploying, and Managing an Enterprise Project Management solution; Delivery Guide, Course Number 2732A, Module 13: Troubleshooting Project Server 2003, Microsoft Press, Redmond, 2003, p. 24

QUESTION 76:

You are the administrator of the Microsoft Enterprise Management solution for Certkiller .com.

Certkiller .com uses Microsoft Office Project 2003 for project and resource management.

You install Microsoft Office Project Server 2003 on Certkiller

A. You set up users to

connect with Windows authentication. The security settings for Microsoft Internet Explorer prevent users from downloading ActiveX components to their client computers.

Users in your domain cannot install programs and cannot change system settings.

You have to prepare the client computers so that users can log on to Project Server and see Project Center views.

What should you do?

A. Change the security settings on the client computers to allow a download of ActiveX components.

B. Add Certkiller A to the list of trusted sites on the client computers.

C. Distribute and install the Pjclient.cab and Pjcintl.cab files on the client computers by using software distribution.

D. Install Microsoft Project Professional on the client computers.

Answer: C

Explanation:

You can deploy the Outlook Integration add-in Setup program (Mpsaddin.exe) to multiple users using the following deployment methods:

? Administrative Installation Point

? Software Installation Group Policy

? Systems Management Server

The Mpsaddin.exe file can be extracted from the PRJSVR1.CAB file from the Project Server 2003 CD. The file in the CAB is called Mpsaddin.exe_1033 and needs to be renamed to Mpsaddin.exe before it can be deployed.

Reference:

Microsoft Training and Certification: Microsoft Official Curriculum: Planning, Deploying, and Managing an Enterprise Project Management solution; Delivery Guide, Course Number 2732A, Module 6: Deploying Project 2003 Clients, Microsoft Press, Redmond, 2003, pp. 39-40

QUESTION 77:

You are the administrator of the Microsoft Enterprise Project Management solution for Certkiller .com.

Certkiller .com uses Microsoft Office Project Server 2003 in all three work shifts. The deployment includes one Windows Server 2003 server, Certkiller 1, that runs Project Server, Views Processing, and Session Management. A second Windows 2000 Server server, Certkiller 2, runs Microsoft SQL Server 2000 and Analysis Services. You deploy Portfolio Analyzer on Certkiller 2. You schedule OLAP cube building to begin each day at 12:00 A.M. As the number of projects grows, the night shift workers report decreased performance when they use Microsoft Office Project Web Access. There are few reports of performance decreases during the other shifts. You test network throughput against your baseline values. You see no increase latency.

You need to restore performance so that users in all three shifts can access the project server with reasonable performance.

What should you do?

- A. Add a new server, Certkiller 3, as an Analysis Services server. Configure Project Server to use Certkiller 3.
- B. Add a new server, Certkiller 3, as a Views Processing server. Reconfigure Project Server to use Certkiller 3 for Views processing.
- C. Add an additional network adapter to the database server, Certkiller 2. Add Certkiller 2's new IP Address to the DNS Server.
- D. Add an archived version in Project Server. Instruct project managers to save their files as archived.

Answer: B

Explanation:

When SQL Server 2000 Analysis Services is installed on a different computer than Project Server 2003, the Decision Support Objects (DSO) component of Analysis Services must be installed on the Project Server 2003 computer and the Views Processing server.

Microsoft SQL Server Analysis Services is required in order to use the Portfolio Analyzer feature of Microsoft Office Project Server 2003. Thus to restore performance after the scheduled OLAP cube building that starts at midnight, you should add a new server as a Views Processing server and have the Project server use it for Views processing.

Reference:

Microsoft Training and Certification: Microsoft Official Curriculum: Planning, Deploying, and Managing an Enterprise Project Management solution; Delivery Guide, Course Number 2732A, Module 3: Installing and Configuring Project System Servers, Microsoft Press, Redmond, 2003, p. 14

QUESTION 78:

You are the administrator of the Microsoft Enterprise Project Management solution for Certkiller .com.

The configuration you develop is made up of a single Microsoft Project Server 2003 server, Certkiller 1, a Views Processing server, Certkiller 2, and a single Microsoft SQL Server 2000 server, Certkiller 3, for the databases and Analysis Services. Team members connect to Certkiller 1 through Microsoft Project Web Access. Certkiller 1 fails. You rebuild Certkiller 1. Some team members report timesheet information from the time the server failed is lost. You need to provide a solution to prevent loss of data in the event of a failure of Project Server.

What should you do?

(Each correct answer presents part of the solution. Choose two.)

- A. Add an additional server as a Session Manager Server.
- B. Complete a backup of the IIS Metabase on Certkiller 1.
- C. Add an additional server as a Project Server server and cluster the front -end service.
- D. Complete hourly backups of the Project Server database on Certkiller 3.
- E. Complete hourly backups of the ViewDrop folder on Certkiller 2.

Answer: A, C

Explanation:

If you installed the Session Manager service on a computer that has a different name than the original server; then uninstall and then reinstall the project Server Front-End service and specify the new computer name on the Enter the Session Manager server name page of the Project Server Setup wizard will recover the computer thus preventing loss of data.

Reference:

Microsoft Corporation, Microsoft Office Project Server 2003 Installation Guide, Microsoft Press, Redmond, 2003, p. 99

Microsoft Corporation, Microsoft Office Project Server 2003 Disaster Recovery Guide, Microsoft Press, Redmond, 2003, p. 41

QUESTION 79:

You are the administrator of the Microsoft Enterprise Project Management solution for Certkiller .com.

You install Microsoft Office Project Server 2003 and Microsoft Windows SharePoint Services with default settings. You create the initial Enterprise Resource Pool from Certkiller .com's Active Directory. Project managers have the authority to hire contractors

and include them as local resources for their projects. Company policy does not allow contractors to have Windows accounts. Contractors must report actual work on projects by using Microsoft Office Project Web Access.

You must configure Project Server to allow project managers to provide the ability for contractors to report their actual work in Project Web Access.

What should you do?

- A. Set the Project Manager group permission by using the Portfolio Managers security template.
- B. Add the Project Manager group to the My Direct Reports category. Select the Allow option for the permission Open Project.
- C. Modify the Team member group permission settings by selecting the Allow option for Adjust Actual.
- D. Select the Allow check box, and clear the Deny option for the Create Accounts from Microsoft Office Project feature.

Answer: D

Explanation:

Since the contractors do not have Windows accounts and they are required to report actual work on projects using Microsoft Office Project Web Access, you would need to follow option D else they will not be able to report their actual work.

Reference:

Microsoft Training and Certification: Microsoft Official Curriculum: Planning, Deploying, and Managing an Enterprise Project Management solution; Delivery Guide, Course Number 2732A, Module 13: Troubleshooting Project Server 2003, Microsoft Press, Redmond, 2003, p. 29

QUESTION 80:

You are the administrator of the Microsoft Enterprise Project Management solution for Certkiller .com.

You install Microsoft SQL Server 2000 and Analysis Services on Certkiller

A. You install

Views Processing on Certkiller B. You install Microsoft Office Project Server 2003 and Session Management on Certkiller C. Team members connect to Project Server by using Microsoft Office Project Web Access. Project managers save and publish their updated projects every Friday afternoon. You notice time-out problems for Project Web Access users on the corporate intranet when project managers publish their projects by using Microsoft Project Professional 2003.

You have to configure the servers so that Project Web Access users can connect to Project Server without time-out problems.

What should you do?

A. Create a second instance of SQL Server on Certkiller

A. Create a database for the Views

tables. Configure Views Processing on Server B to use this instance of SQL Server on Certkiller A.

B. Create a database on Certkiller C for the Analysis repository. Migrate the Analysis repository to this database.

C. Install a second network adapter on Certkiller

A. Configure Views Processing on Certkiller B to use this network adapter.

D. Install a second network adapter on Certkiller

A. Configure Session Management on Certkiller C to use this network adapter.

Answer: C

Explanation

: The description in the question points to a bottleneck situation that develops due to the project managers all publishing their projects on a Friday afternoon. Sometimes a bottleneck develops at the network interface of the database servers, which is caused by communications traffic from the Project Web Access server, Project Professional clients, and the Views Processing/Cube Generation system. All of these system components and clients need to communicate with the Project Server database, which results in a high volume of traffic coming to a single network adapter on the database server. You thus need to install a second network adapter on Certkiller A and configure Views Processing on Certkiller B to use this network adapter.

Reference:

Microsoft Training and Certification: Microsoft Official Curriculum: Planning, Deploying, and Managing an Enterprise Project Management solution; Delivery Guide, Course Number 2732A, Module 2: Planning the Project Server 2003 Infrastructure, Microsoft Press, Redmond, 2003, p. 44

QUESTION 81:

You are the administrator of the Microsoft Enterprise Project Management solution for Certkiller .com.

Certkiller .com uses Novell Directory Services 5.1 (NDS). You install Microsoft SQL Server 2000 on Certkiller

A. You install Microsoft Office Project Server 2003 on Certkiller B. You

install Microsoft Office Project Professional 2003 on the project manager's computers.

Project managers report error messages when they start Microsoft Project Professional and connect to their Project Server accounts. When you create a new ODBC connection on the project managers computers and try to connect to the Project Server database, you receive the error message shown in the Exhibit



You can PING the database server by name.

You have to configure the client computers so that project managers can successfully connect to Project Server.

What should you do?

- A. Run Cliconfg.exe, and make TCP/IP the preferred protocol.
- B. Change the default protocol for ODBC connections to TCP/IP.
- C. Add the IP address Certkiller B to the HOSTS file.
- D. Install the SQL Server client components.

Answer: B

Explanation:

With components such as Project Professional, Project Data Service (PDS), SQL database and Session Manager being used; issues such as the following may occur:

1. If the server URL is incorrect in the Project Server account setup on the client, the logon process will fail because the client will not be able to find a server to validate the user name.
2. If the MSProjectServerUser account is not assigned the proper role in SQL, the PDS will not be able to query the database.
3. If the SQL Server where the Project Server database resides is configured to use a protocol other than TCP/IP,

then the user may not be able to connect. Since the database server can be pinged by name then you should consider changing the default protocol for ODBC connections to TCP/IP.

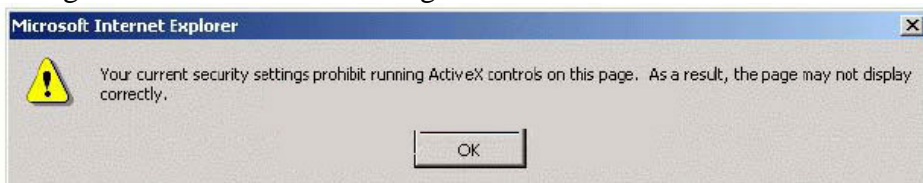
Reference:

Microsoft Training and Certification: Microsoft Official Curriculum: Planning, Deploying, and Managing an Enterprise Project Management solution; Delivery Guide, Course Number 2732A, Module 13: Troubleshooting Project Server 2003, Microsoft Press, Redmond, 2003, p. 21

QUESTION 82:

You are the administrator of Microsoft Office Project Server 2003 for Certkiller .com.

A new team member is given an account on the Project Server server, Server1. She tries to connect to Project Server by using Microsoft Office Project Web Access via the address <http://server1/projectserver> that uses default Microsoft Internet Explorer 6.0 security settings. She sees the error message shown in the exhibit.



When she clicks on the OK button, the team member is directed to return to the License Agreement page for Project Web Access.

You must ensure that this new team member can log on to the projects server by using Project Web Access.

What should you do?

- A. Add the address <http://server1> to the Trusted Sites list in Internet Explorer on the team member's computer.
- B. Add the IP address of the team member's computer to the list of IP addresses that are granted rights on Server1.
- C. Give the team member the Write permission on the Windows directory of the team member's computer.
- D. On the team member's computer, add the address <http://server1> to the list of sites allowed to use cookies regardless of the privacy policy.

Answer: A

Explanation:

In order to access data stored in Project Server 2003 by using Project Web Access, the Project Server and Windows SharePoint Services URLs must be listed as trusted sites in Internet Explorer. Thus you should add on the new team member's computer the address <http://server1> to the Trusted Sites list in Internet Explorer.

Reference:

Microsoft Corporation, Microsoft Office Project Server 2003 Installation Guide, Microsoft Press, Redmond, 2003, p. 136

QUESTION 83:

You are the administrator of Microsoft Office Project Server 2003 for Certkiller .com. You install Project Server and Microsoft Office Project Professional 2003. Managers log in to their Project Server accounts. When managers open Project Professional, they receive the Unable to contact Project Server dialog box. Managers can connect to Microsoft Office Project Web Access by using the browser.

You need to make sure managers can connect to the project server by using Project Professional.

What should you do?

- A. Enter a valid Project Server address in the Account Properties dialog box in Project Professional.
- B. Set each manager's Project Server account as the default account in the Account Properties dialog box in Project Professional.
- C. Add the Project Server address to the Local intranet sites list.
- D. In Project Professional, select the Use Windows user account option on the Account Properties dialog box.

Answer: A

Explanation:

In order for one to connect Project Professional to Project Server 2003, the user's account name and connection information must be entered in the Account Properties dialog box

in Project Professional. This information must specify a valid user name that can authenticate to the computer running Project Server 2003 as well as specify the URL for the computer running Project Server 2003.

Reference:

Microsoft Corporation, Microsoft Office Project Server 2003 Installation Guide, Microsoft Press, Redmond, 2003, p. 135

QUESTION 84:

You are the administrator of the Microsoft Enterprise Project Management solution for Certkiller .com.

You install Microsoft Office Project Server 2003 on Certkiller 1. Users without domain accounts authenticate with Project Server authentication. These users must be able to connect to Project Server.

What should you do?

- A. Enable Anonymous Access to the Project Server virtual site and the MSADCS.DLL file.
- B. Grant access to the Microsoft Project Server\IIS Virtual Root directory for the Everyone account.
- C. Grant access to the Microsoft Project Server\IIS Virtual Root directory for the IUSR_ Certkiller 1 account.
- D. Create a new virtual directory in the default Web site on Certkiller 1.

Answer: A

Explanation:

To allow anonymous access to the Project Server virtual directory and the msadcs.dll one should: 1. on the computer running Project Server 2003, open Internet Information Services (IIS) Manager. 2. Expand the local computer node, and then expand Web Sites. 3. Expand the Web site on which you installed Project Server 2003. 4. Right-click then the project Server directory; and then click Properties. 5. On the Directory Security tab, click Edit. 6. Select the Enable Anonymous Access check box, and then click OK twice and the same procedure for the msadcs.dll respectively.

By granting anonymous access to users, you can enable Project Server users without domain accounts to authenticate with Project Server authentication.

Reference:

Microsoft Corporation, Microsoft Office Project Server 2003 Installation Guide, Microsoft Press, Redmond, 2003, p. 143

QUESTION 85:

You are the administrator of the Microsoft Enterprise Project Management solution for Certkiller .com.

You install Microsoft Office Project Server 2003. You set up users from Certkiller .com to use domain authentication in Project Server. You set up external users without domain account to use Project Server authentication. You enable Anonymous Access for the

ProjectServer virtual directory. Users with domain authentication report they cannot log on to Project Server. They are always returned to the logon screen.

You have to configure Project Server so that users with Windows accounts and users with Project Server accounts can log on successfully.

What should you do?

- A. In the Project Server security administration, set the minimum password length to 0.
- B. Grant Read and Execute (RX) access to the Project Server IIS Virtual Root directory for Everyone.
- C. Create a ProjectServer group in the Active Directory. Add all users for Project Server to it.
- D. Remove Anonymous Access from the LGINT files in the ProjectServer virtual directory.

Answer: D

Explanation:

Since users with Windows accounts and Project Server accounts have domain authentication, you should disable Anonymous Access to allow them log on abilities.

Reference:

Microsoft Training and Certification: Microsoft Official Curriculum: Planning, Deploying, and Managing an Enterprise Project Management solution; Delivery Guide, Course Number 2732A, Module 3: Installing and Configuring Project System Servers, Microsoft Press, Redmond, 2003, p. 11

QUESTION 86:

You are the administrator of the Microsoft Enterprise Project Management solution for Certkiller .com.

You install Microsoft SQL Server 2000 on Certkiller 1. You install Microsoft Office Project Server 2003, Views Processing, and Session Management on Certkiller 2. You install Microsoft Office Project Professional on the client computers for your project managers. All users use the Windows authentication to log on to Project Server. Your project managers can log on to Microsoft Office Project Web Access successfully, and they can open their projects from Project Center. The project managers report that after they start Project Professional, they cannot access the list of projects from Project Server.

You have to configure the project manager's client computer so that the manager can access and open their projects from Project Server.

What should you do?

- A. Run Clconfig.exe on the client computers. Make TCP/IP the preferred protocol.
- B. Create a SQL Server DSN called "PC10DSN" on the client computers that point to the Project Server database, Certkiller 1.
- C. Create a Project Server account on the client computer.
- D. Change the authentication method to Project Server authentication.

Answer: C

Explanation:

A project server account on the client computer will allow the manager to access and open their projects from the server.

Reference:

Microsoft Corporation, Microsoft Office Project Server 2003 Administrators Guide, Microsoft Press, Redmond, 2003, p. 73

QUESTION 87:

You are the administrator for Microsoft Office Project Server 2003 for Certkiller .com.

You install Microsoft SQL Server 2000 and Project Server on Certkiller

A. You create

service accounts with the appropriate permissions. You install Microsoft Windows SharePoint Services. You run Wsswiz.exe. You install Analysis Services on Certkiller B. On the Setup menu for Project Server, you select the page that allows you to connect to a Web server that runs Windows SharePoint Services. You choose to enter this connection information later. You decide to support Documents and Issues in your Microsoft Enterprise Project Management solution. You enter the attributes for Certkiller A on the Manage Windows SharePoint Services page.

By using the least administrative effort, you need to ensure that the Project Server, Certkiller A, can connect to Windows SharePoint Services.

What should you do?

- A. Run ProxyCfg.exe.
- B. Run ConnInfo.exe.
- C. Run PSComPlus.exe.
- D. Run SetTracing.exe.

Answer: C

Explanation:

There are two places in Microsoft Project Server Setup where you are asked for Windows account information: at the "Enter Analysis Services connection information" page and the "Enter account information for Windows SharePoint

Services (continued)" page. This account information is used to generate the COM+ packages Microsoft Project Server uses in order to start other processes such as creating OLAP cubes or administering the SharePoint server. Thus it follows that if you want to ensure that project managers can access the Project Server Public Documents site you should run the PSComPlus.exe utility. Under the circumstances, this will be the least amount of administrative effort to ensure that Project Server Certkiller A can connect to WSS.

The ConnInfo.exe utility must be used after backing up and restoring the data information. It is also used to point the Project Server frontend server to the new SQL Server. And this is not what is required.

Reference:

Microsoft Training and Certification: Microsoft Official Curriculum: Planning, Deploying, and Managing an Enterprise Project Management solution; Delivery Guide, Course Number 2732A,

Module 3: Installing and Configuring Project System Servers, Microsoft Press, Redmond, 2003, p. 1

QUESTION 88:

You are the administrator of the Microsoft Enterprise Project Management solution for Certkiller .com.

Certkiller .com uses Microsoft Office Project Server 2003. You install a new server, Certkiller A, with Windows Server 2003. You install Microsoft Windows SharePoint Services on Certkiller

A. You create a domain user account called "WSSAdmin." You add the account to the local Administrators group on Certkiller

A. You run PSComPlus.exe on the project server. You want to connect Project Server to Windows SharePoint Services you want to save all documents for the projects to Windows SharePoint Services.

You have to configure Windows SharePoint Services so that Project Server can be connected to Windows SharePoint Services.

What should you do?

Identify the task that you should perform to achieve your goal. Move the tasks from the Tasks pane to the Ordered Tasks pane, and arrange them in the appropriate order. (Use only tasks that apply.)

Tasks	Ordered Tasks
Create a new Web site on CertkillerA. Extend the site by using SharePoint Central Administration.	
Configure Windows SharePoint Services to use the project Server database as a content database.	
Run Wsswiz.exe on CertkillerA	
Add the Project Server database as a content database to the extended web site.	

Answer:

QUESTION 89:

You are the administrator of the Microsoft Enterprise Project Management solution for Certkiller .com.

Certkiller .com implements Microsoft Office Project Server 2003. Project Server and Microsoft SQL Server 2000 are located on the same subnet. Client workstations for Project Server are on a different subnet. You back up the Project Server database each night. The SQL Server server that hosts the Project Server database experiences a hard drive failure. You build a replacement SQL Server server and restore the data.

Users report that they cannot connect to Project Server by using either Microsoft Office

Project Professional or Microsoft Office Project Web Access. You attempt to access Project Web Access by using the Administrator account. You receive an error notification that states that you are unable to log on the project server.

You must ensure that users can connect to the project server by using both Project Professional and Project Web Access.
What should you do?

- A. Delete and recreate the local accounts for Microsoft Windows SharePoint Services and OLAP. Add the OLAP administrator account to the OLAP Administrators group. Add both accounts to the Administrators group.
- B. Use PSComPlus.exe to delete and recreate all identities.
- C. Add the MSProjectServerUser and MSProjectUser users and appropriate roles to the restored Project Server database.
- D. Reconfigure the properties of SQL Server to enable TCP/IP protocol connections.

Answer: C

Explanation:

Each database role defines a set of users and groups and the access they share. A database role can be assigned to any cube and any data mining models in the database. This action grants users access to the cube or mining model if they have been assigned to that role. It also creates a cube role or mining model role with the same name as the database role.

A cube role applies to only a single cube. The default values for a cube role are derived from the database role of the same name. Some of these defaults can be overridden in the cube role. In this case, the specifications in the database role are not the specifications applied to users in the role who access the cube. To determine the specifications that are used, see the cube role.

To ensure connectivity you should add the two groups of users with the appropriate roles to the restored Project Server database.

Reference:

Microsoft Training and Certification: Microsoft Official Curriculum: Planning, Deploying, and Managing an Enterprise Project Management solution; Delivery Guide, Course Number 2732A, Module 9: Configuring and Managing Views and Security, Microsoft Press, Redmond, 2003, p. 28

QUESTION 90:

You are the administrator of the Microsoft Enterprise Project Management solution for Certkiller .com.

You install Microsoft Windows SharePoint Services on a Microsoft Windows 2003 server. You run the Windows SharePoint Services configuration wizard with all default settings.

You install Microsoft Project Server 2003. On the screen where you can choose to connect to a Web server running Microsoft Windows SharePoint Services, you decide to wait until later to connect to the Windows SharePoint Services server. You run the PSCOMPlus.exe utility. Users report they cannot connect to the Document sites from Microsoft Project Web Access.

You must configure Project Server to allow connection to the Windows SharePoint

Services Document sites from Project Web Access.
What should you do?

- A. Run the Editsite.exe utility. Select the IIS server that is running Windows SharePoint Services.
- B. On the SQL Server Enterprise Manager, add the MSProjectUser role to the list of roles in the Windows SharePoint Services configuration database.
- C. On the Manage Windows SharePoint Services page in Project Web Access, select the Synchronize administrator accounts option.
- D. Run the ProxyCfg.exe configuration utility. Enter the appropriate Windows SharePoint Services connection information in the Project Web Access.

Answer: D

Explanation:

You can configure SharePoint Portal Server to use a proxy server when it creates indexes of external Web sites. Using a proxy server enhances the security of your intranet by preventing unauthorized access by someone on the Internet. To configure the SharePoint Portal Server computer to import Web Parts to the dashboard site, you must use a tool called proxycfg.exe, located under the SharePoint Portal Server \Bin directory. You must use the proxycfg.exe tool located under the SharePoint Portal Server \Bin directory to exclude access to the server from going through the proxy server.

Reference:

Microsoft Sharepoint Portal Server Administrator's Help

QUESTION 91:

You are the administrator of the Microsoft Enterprise Project Management solution for Certkiller .com.
Certkiller .com wants to use Microsoft Office Project Server 2003 for project and resource management. You install Microsoft SQL Server 2000 on Certkiller A and accept all the default settings. You install the latest service packs for SQL Server.
You have to configure the SQL Server so that Project Server can connect to it when you install Project Server.
What should you do?

- A. Add the NT AUTHORITY\NETWORK SERVICE group to the SQL Server.
- B. Set the SQL Server to run in mixed mode.
- C. Set the TCP/IP protocol on Certkiller A as the preferred protocol.
- D. License the SQL Server client connections in the per connection mode.

Answer: B

Explanation:

Microsoft SQL Server Mixed Mode authentication allows users to connect to an instance of SQL Server using either Microsoft Windows Authentication or Microsoft SQL

Server Authentication. Project Server 2003 requires Mixed Mode authentication in order to use either Windows or SQL Server authentication. Be sure the SQL server you are designating for Project Server 2003 is configured using Mixed Mode authentication.

Reference:

Microsoft Training and Certification: Microsoft Official Curriculum: Planning, Deploying, and Managing an Enterprise Project Management solution; Delivery Guide, Course Number 2732A, Module 3: Installing and Configuring Project System Servers, Microsoft Press, Redmond, 2003, pp. 12, 13

QUESTION 92:

You are the administrator of the Microsoft Enterprise Project Management solution for Certkiller .com.

You install Microsoft Office Project Server 2003. You install Analysis Services with the latest service pack on its own server. You configure Microsoft Office Project Server to use the new Analysis Services server. You schedule Portfolio Analyzer cube creation to run each Saturday night.

On the following Monday, executives receive the error message shown in the exhibit when they attempt to view Portfolio Analyzer reports by using Microsoft Office Project Web Access.



Unable to access the Microsoft Office Project Portfolio Analyzer OLAP cube.
The cube may not exist or you may not use permissions to access the cube

You check Project Web Access. You see the message that the cube was successfully built on Saturday. You search the client machines and find owc11.dll in the c:\program files\common files\Microsoft Shared\Web Components\11 directory.

You must ensure executives can view cube data in the Portfolio Analyzer.

What should you do?

- A. Reinstall the service pack for Analysis Services on the OLAP server.
- B. Build the cube manually from within Project Web Access.
- C. Create a domain or local group. Add the executives to this group. Create an Analysis Services role for this group. Give this role access to the MSP_PORTFOLIO_ANALYZER cube.
- D. Create a domain or local group. Add the executives to this group. Create an Analysis Services role for this group. Give this role access to the MSP_ASSN_FACT cube.

Answer: C

Explanation:

Analysis Services cube role problems can occur when a Project Web Access user attempts to open a Portfolio Analyzer view. This problem is caused by either: The OLAPAdministrator account is not a member of the Cube Role OR the current Windows account on the client attempting to access is not added to the Cube Role. To solve the problem add the Windows account of the client to the Cube role if the current Windows account on the client attempting to access Portfolio Analyzer is not added to the Cube Role. In the scenario of the question, the role should be created for the executives and this role should be given access to the

MSP_PORTFOLIO_ANALYZER cube.

Reference:

Microsoft Training and Certification: Microsoft Official Curriculum: Planning, Deploying, and Managing an Enterprise Project Management solution; Delivery Guide, Course Number 2732A, Module 13: Troubleshooting Project Server 2003, p. 16

QUESTION 93:

You are the administrator of Certkiller .com's Microsoft Enterprise Project Management solution.

You are preparing to partition the database for a new installation. You create a new database named "ProjectServer_Views" on Certkiller B. You plan to connect Microsoft Office Project Server 2003 to an existing Project Server database for the main database on Certkiller

A. You plan to partition the Views Processing Tables to a newly created database named "ProjectServer_Views" on Certkiller B. You create the Microsoft SQL Server 2000 logins MSProjectViews and MSProjectServerViews on Certkiller B. You execute the script PSRoles.sql on Certkiller B. You add the MSProjectViews login to the MSProjectServerUser role in ProjectServer_Views. You add the MPSProjectServerViews login to the MSProjectServerUser role in ProjectServer_Views. You execute the scripts ViewsTabls.sql ad ViewsPs.sql against the ProjectServer_Views database on Certkiller B. During installation, you choose to connect to an existing database on Certkiller A named "ProjectServer" for the main Project Server database. You choose to partition the Views Tables to ProjectServer_Views on Certkiller B. You are prompted by a dialog box that says, "Database server: Certkiller B: The server you entered is not responding. Check that the name is valid and try again." You validate that you can physically connect to Certkiller B. You verify that the Microsoft SQL Server 2000 is running correctly on Certkiller B. You need to ensure that Project Server can use Certkiller B to host its Views tables. What should you do?

- A. Change the name of the ProjectServer_Views database on Certkiller B to "ProjectServer" to match the name of the database on Certkiller
- A. Return to the Connection Information for Views Tables screen.
- B. Add the address of Certkiller B to the hosts file on the Web Certkiller A.
- C. Add the SQL accounts MSProjectServer User and MS ProjectUser with identical passwords to those accounts on Certkiller A to Certkiller B. Add MSProjectUser to the MSProjectRole and MSProjectServerUser to the MSProjectServerRole in the ProjectServer_Views database.
- D. Stop and Restart the SQLServer service on Certkiller B.

Answer: C

Explanation:

Views, like the views in Microsoft Project, are a collection of Microsoft Project fields, groups and filters, or charts. To provide users or groups access to a view, define the view as a category and then grant permissions to the category for the users or groups. You can define

views for the Project Center, Resource Center, and Portfolio Analyzer pages.

The information you enter in the Enter connection information for Views tables installs the Project Server 2003 View Tables in the main Project Server 2003 database. This option allows the Project Server database to be installed across two physical SQL Server 2000 database servers for scalability and better performance.

Reference:

Microsoft Training and Certification: Microsoft Official Curriculum: Planning, Deploying, and Managing an Enterprise Project Management solution; Delivery Guide, Course Number 2732A, Module 4: Implementing Project Server, Microsoft Press, Redmond, 2003, p. 6

QUESTION 94:

You are the administrator of the Microsoft Enterprise Project Management solution for Certkiller .com.

You install the Enterprise Project Management solution for Certkiller .com. You install Microsoft SQL Server 2000 on Certkiller 1. You install Views Processing, Analysis Services, and Session Management on Certkiller 2. You install Microsoft Project Server 2003 on Certkiller 3.

The company's 2000 employees all use Project Server timesheets to report actual hours worked daily. Project managers update their projects weekly. Users report that they are sometimes unable to connect to the project server during peak times.

You must ensure that users can connect to the project server reliably. Your solution should optimize your servers for future growth.

What should you do?

- A. Install the Views Processing tables to another SQL Server on fourth server, Certkiller 4. Configure the Views Processing Services on Certkiller 2 to connect to this separate database on Server 4.
- B. Install five instances of Project Server to different virtual sites on the Project Server computer, Certkiller 3. Connect each site to the SQL Server on Certkiller 1. Instruct groups of 400 users to connect to one of the virtual sites on Certkiller 3.
- C. Install a second network adapter on the SQL Server computer Certkiller 1. Connect Certkiller 3 to one of the network adapters. Connect Certkiller 2 to the other network adapter.
- D. Install a second instance of the SQL Server on Certkiller 1. Move the Analysis Server database repository to the second instance of the SQL Server. Connect Analysis Server to the repository on the second instance.

Answer: A

Explanation:

One of the tasks prior to building a Portfolio Analyzer View, is to set up views processing on a separate server. When projects are published to the Microsoft Project Server, a copy of the project is uploaded and is used to create project view data. This process consumes a large share of network resources because it must open the project in the Microsoft Project OLE DB provider and save data from which views will be built. You can offload this service to improve the scalability and performance of a single IIS-based server running Microsoft Project

Server, or of a farm of IISbased servers. If the Project Server 2003 front end computer is deployed in a Network Load Balancing cluster then this service must be moved to a computer outside the Network Load Balancing cluster.

Thus by installing Views Processing tables to SQ1 Server, Certkiller 4, and configure Views Processing Services on Certkiller 2 to connect to this separate database on Certkiller 4, you will ensure that users can connect to the project server reliably.

Reference:

Microsoft Training and Certification: Microsoft Official Curriculum: Planning, Deploying, and Managing an Enterprise Project Management solution; Delivery Guide, Course Number 2732A, Module 4: Implementing Project Server, Microsoft Press, Redmond, 2003, p. 4 and Module 9: Configuring and Managing Views and Security, Microsoft Press, Redmond, 2003, pp. 39-40

QUESTION 95:

You are the administrator of the Microsoft Enterprise Project Management solution for Certkiller .com.

Certkiller .com is standardized on Microsoft Office 2000. Certkiller .com's written security policy specifies that ActiveX controls cannot be downloaded. You install Microsoft Office Project Server 2003. During the installation, you manually deploy the Project Server ActiveX control. You install Analysis Services with the latest service pack on its own server. You configure Project Server to use the new Analysis Service server. You schedule Portfolio Analyzer cube creation to run each Saturday night.

On the following Monday, executives try to view Portfolio Analyzer reports by using Microsoft Office Project Web Access. They receive an error message that they cannot access the cube. You check Project Web Access and see the message that the cube was built successfully on Saturday. You verify that the Organizational Unit the executives belong to has an Analysis Service role with access to the MSP_PORTFOLIO_ANALYZER cube. You need to ensure that executives can view cube data in the Portfolio Analyzer without undermining the company's written security policy.

What should you do?

- A. Reinstall the service pack for Analysis Services on the OLAP Server.
- B. Build the cube manually from within Project Web Access.
- C. Add the project server to the list of trusted sites on each client computer.
- D. Create an Analysis Services role for the executives' Organizational Unit. Give this role access to the MSP_ASSN_FACT cube.
- E. Copy the OWC11.dll file to each executive's workstation. Run Regsvr32.exe.

Answer: E

Explanation:

Because there are no specific installation directory requirements, besides the non-downloading of ActiveX controls and that the Project Server ActiveX control was manually deployed during installation; you must register them by using the Regsvr32 tool (Regsvr32.exe). you only need to install the controls once on each executive's workstation in order for them to have access to them. If you need to uninstall these controls at any time, you can use Regsvr32.exe to uninstall them.

Reference:

Microsoft Corporation, Microsoft Office Project Server 2003 Installation Guide, Microsoft Press, Redmond, 2003, p. 245